

1

2

3

4

**HANDLES & LATCHES**

**5**

6

7

8

9

10

11











12

13

14

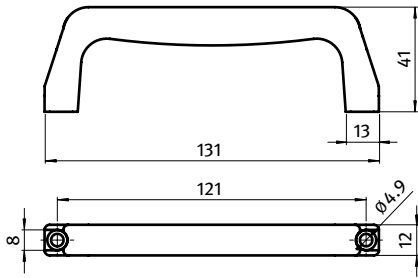
## HANDLES &amp; LATCHES

	FRONT HANDLE	634		HANDLE AL 120 BENDED	652
	BRIDGE HANDLE 122	635		HANDLE AL 200 BENDED	653
	BRIDGE HANDLE 152	636		FASTENING SET FOR HANDLE AL 120	654
	BRIDGE HANDLE WITH COVER CAP	637		FASTENING SET FOR HANDLE AL 200	655
	HANDLE	638		SLAM LATCH ZN	656
	COVER CAP FOR HANDLE	639		SLAM LATCH COMPACT	659
	BRIDGE HANDLE B	640		TWIN SLAM LATCH COMPACT	660
	MACHINE HANDLE 135	641		SLIDE DOOR LATCH COMPACT	661
	COVER CAP FOR MACHINE HANDLE 135 (SET)	642		SLAM LATCH PRO	662
	MACHINE HANDLE 240	643		EMERGENCY OPENER FOR SLAM LATCH	663
	COMFORT HANDLE	644		DOOR LOCK (SET)	664
	SYSTEM HANDLE	645		MAGNETIC CATCH HANDLE COMPACT	665
	COVER CAP FOR COMFORT AND SYSTEM HANDLE (SET)	646		MAGNETIC CATCH 20 (SET)	666
	SYSTEM HANDLE BENT	647		MAGNETIC CATCH 30 (SET)	667
	TUBES FOR SYSTEM HANDLE	648		ANGLE BRACKET FOR MAGNETIC CATCH 30	668
	STRIP HANDLE (SET)	649		BALL CATCH 30	669
	HANDLE AL 120	650		SPACER FOR BALL CATCH 30	670
	HANDLE AL 200	651		ANGLE BRACKET FOR BALL CATCH 30	671

	ANGLE BRACKET FOR BALL CATCH 30 / SAFETY SWITCH AZ 16	672
	DOOR LATCH (SET)	673
	DOUBLE BALL CATCH PA	674
	DOUBLE BALL CATCH MS	675
	DOOR LATCH	676
	DOOR STOP WITH EPDM DAMPER (SET)	677
	DOOR STOP WITH MAGNETIC CATCH (SET)	678
	SEALING STRIP B	679
	SEALING STRIP I	680
	SEALING PROFILE SLOT 8 - 4.5 / 18 X 20	681

**FRONT HANDLE**

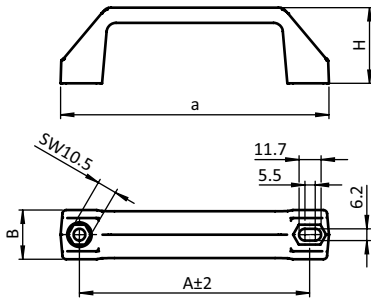
<b>MODEL</b>	Plastic PA
<b>DESCRIPTION</b>	To mount on doors, flaps and aluminum profiles
<b>MATERIAL</b>	Plastic PA, glass fiber reinforced
<b>COLOR</b>	Black
<b>FASTENING</b>	From the front, using countersunk screws
<b>PACK QUANTITY</b>	10 pieces
<b>SPECIALS</b>	ESD electrostatical discharging, other sizes, other colors on request



for Screw	Weight [g]	Part #
M4	30.0	<b>092005</b>

**BRIDGE HANDLE 122**

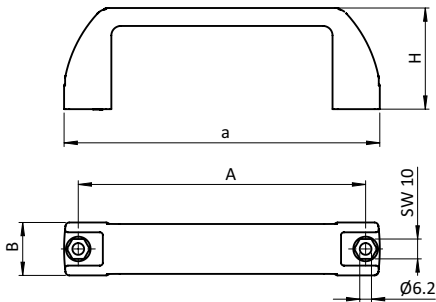
<b>MODEL</b>	Plastic PA, 122 mm
<b>DESCRIPTION</b>	To mount on doors, flaps and aluminum profiles
<b>MATERIAL</b>	Plastic PA, glass fiber reinforced
<b>COLOR</b>	Black
<b>FASTENING</b>	From the front, using socket head screws; from the back using inserted hexagon nuts or hexagon cap screws
<b>PACK QUANTITY</b>	10 pieces
<b>SPECIALS</b>	Other colors on request



A [mm]	B [mm]	H [mm]	for Nut	for Screw	a [mm]	Weight [g]	Part #
122.0	26.0	40.0	SW10 (M6)	M6	142.0	125.0	092001

**BRIDGE HANDLE 152**

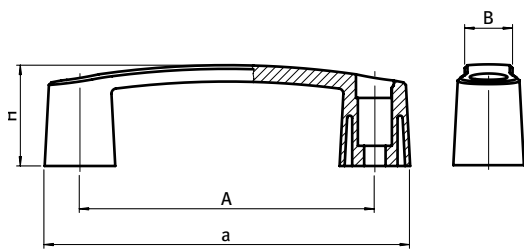
<b>MODEL</b>	Plastic PA, 152 mm
<b>DESCRIPTION</b>	To mount on doors, flaps and aluminum profiles
<b>MATERIAL</b>	Plastic PA, glass fiber reinforced
<b>COLOR</b>	Black, yellow
<b>FASTENING</b>	From the front, using socket head screws; from the back using inserted hexagon nuts or hexagon cap screws
<b>PACK QUANTITY</b>	10 pieces
<b>SPECIALS</b>	Other colors on request



Color	ESD	A [mm]	B [mm]	H [mm]	for Nut	for Screw	a [mm]	Weight [g]	Part #
Black		152.0	28.0	53.5	SW10 (M6)	M6	167.0	83.9	<a href="#">092002</a>
	ESD electrostatical discharging	152.0	28.0	53.5	SW10 (M6)	M6	167.0	75.9	<a href="#">092002S04</a>
Yellow ≈ RAL 1023		152.0	28.0	53.5	SW10 (M6)	M6	167.0	83.9	<a href="#">092002S03</a>

**BRIDGE HANDLE WITH COVER CAP**

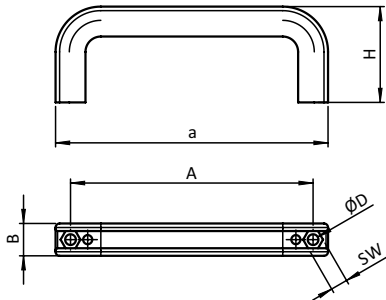
<b>MODEL</b>	Plastic PA, with plain bore and cover caps
<b>DESCRIPTION</b>	To mount on doors, flaps and aluminum profiles
<b>MATERIAL</b>	Plastic PA, glass fiber reinforced
<b>COLOR</b>	Black
<b>FASTENING</b>	From the front, using socket head screws
<b>PACK QUANTITY</b>	10 pieces
<b>SPECIALS</b>	Other colors on request
<b>TIP</b>	Dimensions in brakets apply when assembled



A [mm]	B [mm]	H [mm]	for Screw	a [mm]	Weight [g]	Part #
94.0	17.0	35.0	M6	120.0	32.0	<a href="#">12093B65</a>
117.0	19.0	40.0	M8	145.0	48.0	<a href="#">12117B85</a>
132.0	20.0	45.0	M8	163.0	58.0	<a href="#">12132B85</a>
179.0	22.0	50.0	M8	213.0	87.0	<a href="#">12179B85</a>

**HANDLE**

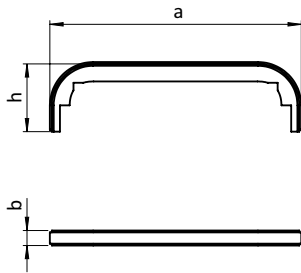
<b>MODEL</b>	Plastic PA, 120 and 160 mm
<b>DESCRIPTION</b>	To mount on doors, flaps and aluminum profiles
<b>MATERIAL</b>	Plastic PA, glass fiber reinforced
<b>COLOR</b>	Black, yellow, red, blue, gray
<b>FASTENING</b>	From the front with hexagon cap screws or socket head screws, or from the back using M8 hexagon nuts and bolts
<b>PACK QUANTITY</b>	10 pieces
<b>SPECIALS</b>	Other colors on request



Version	Color	A [mm]	B [mm]	H [mm]	ØD [mm]	SW	for Screw	a [mm]	Weight [g]	Part #
120.0	Black	120.0	16.0	48.0	5.3	8.5	M5	134.0	30.0	<a href="#">092012</a>
120	Gray ≈ RAL 7042	120.0	16.0	48.0	5.3	8.5	M5	134.0	30.0	<a href="#">092012S01</a>
160	Black	160.0	28.0	60.0	8.5	14.0	M8	188.0	91.4	<a href="#">092017</a>
160	Blue ≈ RAL 5010	160.0	28.0	60.0	8.5	14.0	M8	188.0	91.4	<a href="#">092017S03</a>
160	Gray ≈ RAL 7042	160.0	28.0	60.0	8.5	14.0	M8	188.0	91.4	<a href="#">092017S05</a>

**COVER CAP FOR HANDLE**

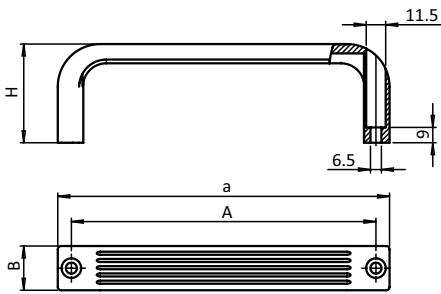
<b>MODEL</b>	Plastic PA, 120 and 160 mm
<b>DESCRIPTION</b>	To cover the open side of the handle
<b>MATERIAL</b>	Plastic PA, glass fiber reinforced
<b>COLOR</b>	Black, yellow, red, blue, gray
<b>PACK QUANTITY</b>	10 pieces
<b>SPECIALS</b>	Other colors on request



Master	Version	Color	b [mm]	a [mm]	h [mm]	Weight [g]	Part #
092019	120	Black	8.0	133.5	37.0	5.7	<a href="#">092019</a>
092019S01	120	Gray ≈ RAL 7042	8.0	133.5	37.0	5.7	<a href="#">092019S01</a>
092018	160	Black	18.0	186.0	47.0	21.4	<a href="#">092018</a>
092018S03	160	Blue ≈ RAL 5010	18.0	186.0	47.0	21.4	<a href="#">092018S03</a>
092018S05	160	Gray ≈ RAL 7042	18.0	186.0	47.0	21.4	<a href="#">092018S05</a>

**BRIDGE HANDLE B**

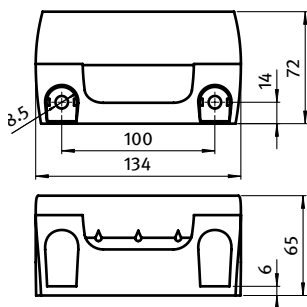
<b>MODEL</b>	Plastic PA
<b>DESCRIPTION</b>	To mount on doors, flaps and aluminum profiles
<b>MATERIAL</b>	Plastic PA, glass fiber reinforced
<b>COLOR</b>	Black, gray
<b>FASTENING</b>	From the front, using socket head screws
<b>PACK QUANTITY</b>	10 pieces
<b>SPECIALS</b>	Other colors on request



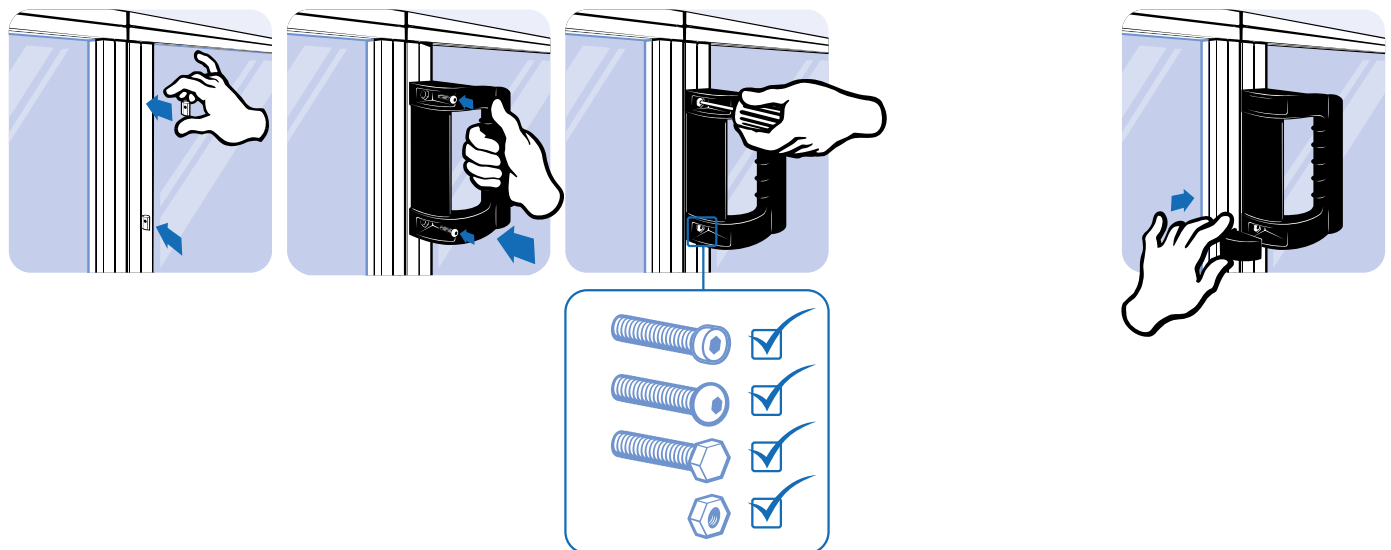
Version	Color	ESD	A [mm]	B [mm]	H [mm]	for Screw	a [mm]	Weight [g]	Part #
133	Black		118.0	26.0	50.0	M6	133.0	52.9	<a href="#">092308</a>
195	Black		179.0	26.0	58.0	M6	195.0	74.4	<a href="#">092307</a>
133	Black	ESD electrostatical discharging	118.0	26.0	50.0	M6	133.0	52.0	<a href="#">092308S01</a>
195	Black	ESD electrostatical discharging	179.0	26.0	58.0	M6	195.0	65.3	<a href="#">092307S01</a>
133	Gray ≈ RAL 7004		118.0	26.0	50.0	M6	133.0	52.9	<a href="#">092308S02</a>
195	Gray ≈ RAL 7004		179.0	26.0	58.0	M6	195.0	74.4	<a href="#">092307S02</a>

**MACHINE HANDLE 135**

<b>MODEL</b>	Plastic PA
<b>DESCRIPTION</b>	Machine handle with ergonomic design and finger protection; to mount on doors, flaps and aluminum profiles; optional with cover caps
<b>MATERIAL</b>	Plastic PA, glass ball reinforced
<b>COLOR</b>	Black
<b>FASTENING</b>	With hexagon cap screws or socket head screws
<b>PACK QUANTITY</b>	10 pieces
<b>SPECIALS</b>	ESD electrostatical discharging, other sizes, other colors on request
<b>TIP</b>	Please note: 1 set = 2 pieces

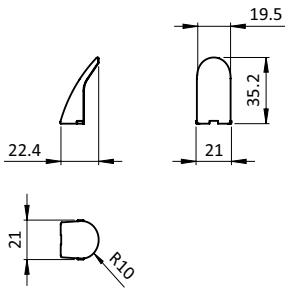


Version	for Screw	Weight [g]	Part #
Optional with cover caps	M8	114.0	092009



**COVER CAP FOR MACHINE HANDLE 135 (SET)**

<b>MODEL</b>	Plastic PA
<b>DESCRIPTION</b>	For Machine handle with ergonomic design
<b>MATERIAL</b>	Plastic PA, glass ball reinforced
<b>COLOR</b>	Black
<b>PACK QUANTITY</b>	10 sets
<b>SPECIALS</b>	ESD electrostatical discharging, other sizes, other colors on request
<b>TIP</b>	Please note: 1 set = 2 pieces



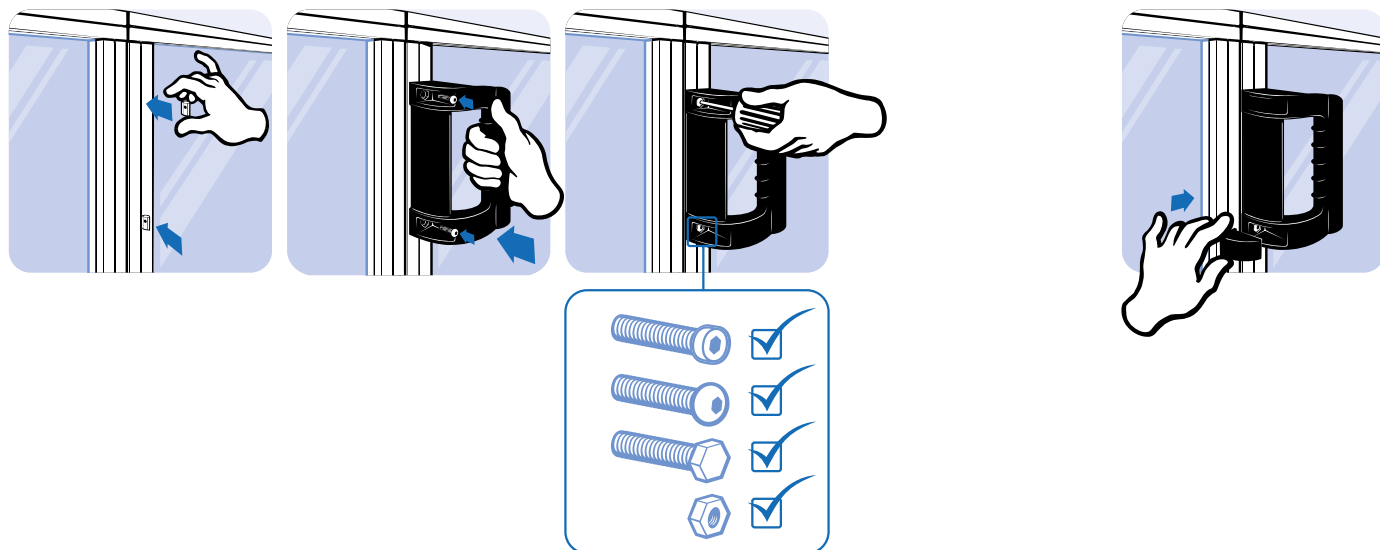
	Weight [g]	Part #
	3.0	092010

**MACHINE HANDLE 240**

<b>MODEL</b>	Plastic PA
<b>DESCRIPTION</b>	Large machine handle with ergonomic design and finger protection; to mount on doors, flaps and aluminum profiles; with cover caps
<b>MATERIAL</b>	Plastic PA, glass ball reinforced
<b>COLOR</b>	Black
<b>FASTENING</b>	From the front with hexagon cap screws or socket head screws, or from the back using M8 hexagon nuts and bolts
<b>PACK QUANTITY</b>	1 piece
<b>SPECIALS</b>	ESD electrostatical discharging, other sizes, other colors on request



Version	for Screw	Weight [g]	Part #
With cover caps	M8	356.0	092008

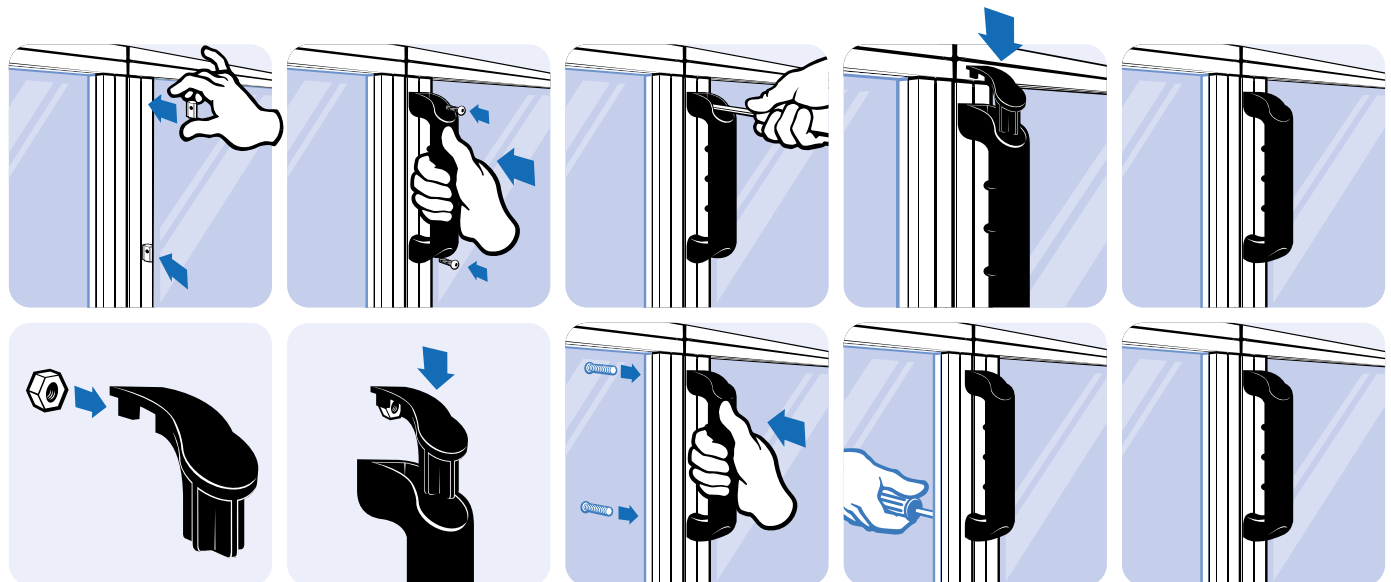


COMFORT HANDLE

<b>MODEL</b>	Plastic PA, 120, 160 and 200 mm
<b>DESCRIPTION</b>	To mount on doors, flaps and aluminum profiles
<b>MATERIAL</b>	Plastic PA, glass ball reinforced
<b>COLOR</b>	Black
<b>FASTENING</b>	From the front with hexagon screws, from the back with screws and with nuts inserted into the cover caps
<b>PACK QUANTITY</b>	10 pieces
<b>SPECIALS</b>	Other colors on request
<b>TIP</b>	Please note: 1 set = 2 pieces
<b>TIP 2</b>	Compatible Cover Cap for Comfort and System Handle (Set) see 092301

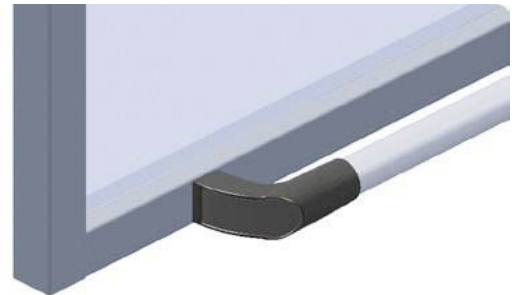
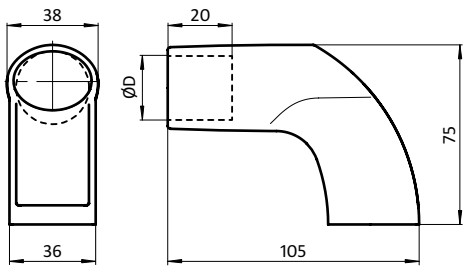


Fig.	Version	A [mm]	D [mm]	b [mm]	B [mm]	H [mm]	for Screw	a [mm]	Weight [g]	Part #
①	120	120.0	6.2	16.0	20.0	48.0	M6	142.0	26.2	092300
②	160	160.0	8.2	26.0	30.0	60.0	M8	188.0	53.8	092302
③	200	200.0	8.2	36.0	38.0	75.0	M8	236.0	117.2	092304

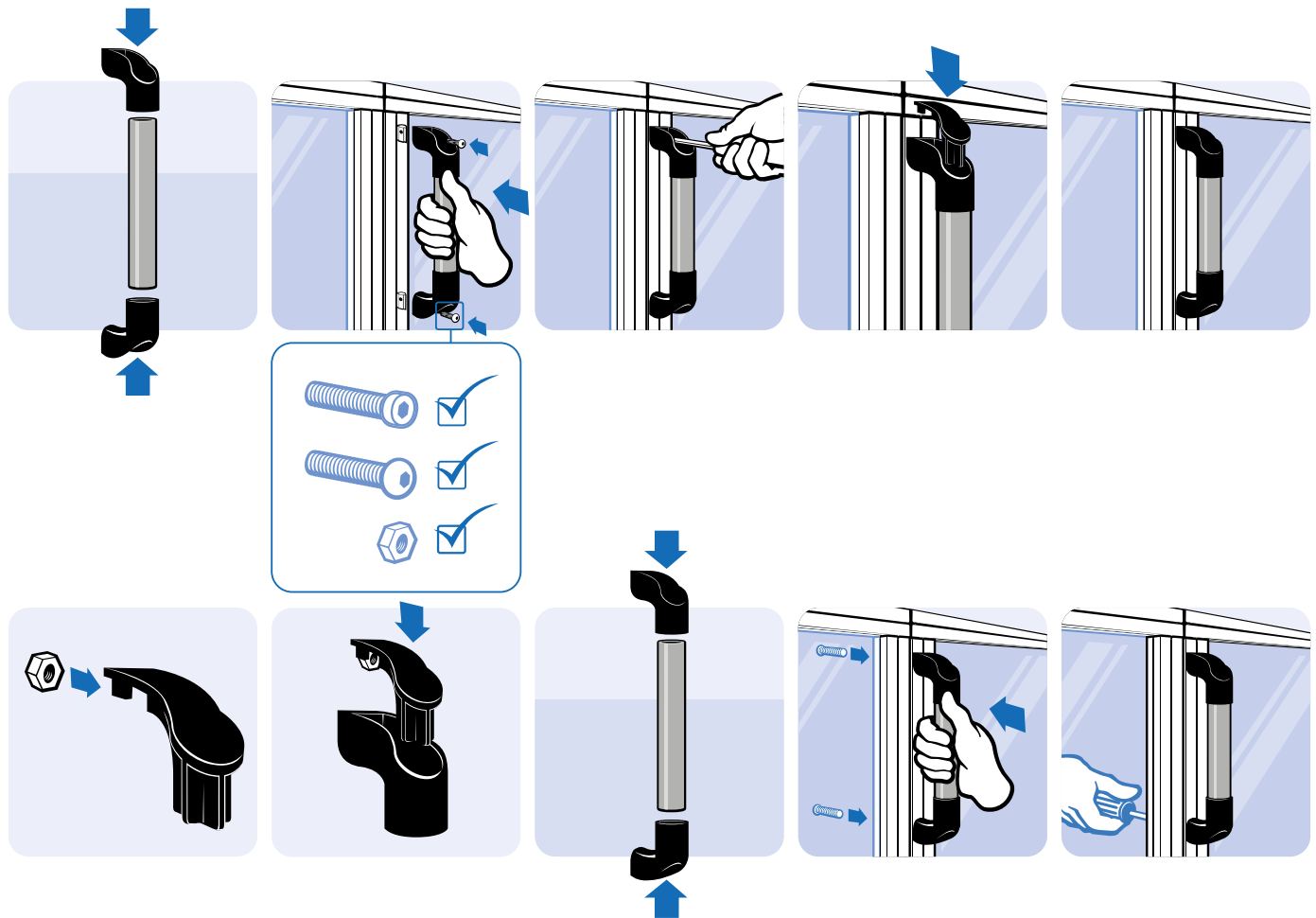


SYSTEM HANDLE

<b>MODEL</b>	Plastic PA
<b>DESCRIPTION</b>	To mount on doors, flaps and aluminum profiles
<b>MATERIAL</b>	Plastic PA, glass ball reinforced
<b>COLOR</b>	Black
<b>FASTENING</b>	From the front with hexagon screws, from the back with screws and with M8 nuts inserted into the cover caps
<b>PACK QUANTITY</b>	10 sets
<b>SPECIALS</b>	Other colors on request
<b>TIP</b>	Please note: 1 set = 2 pieces
<b>TIP 2</b>	Compatible Cover Cap for Comfort and System Handle (Set) see 092305



Version	ØD [mm]	for Screw	Weight [g]	Part #
Set of end pieces D30*	30.1	M8	123.0	092013
Set of end pieces D28*	28.1	M8	126.0	092321



**COVER CAP FOR COMFORT AND SYSTEM HANDLE (SET)**

<b>MODEL</b>	Plastic PA
<b>DESCRIPTION</b>	To cover the end of the handle By inserting a nut into the cover cap, mounting the handle from the back is possible
<b>MATERIAL</b>	Plastic PA, glass ball reinforced
<b>COLOR</b>	Black
<b>PACK QUANTITY</b>	10 sets
<b>SPECIALS</b>	Other colors on request
<b>TIP</b>	Please note: 1 set = 2 pieces
<b>TIP 2</b>	Compatible Comfort Handle see 092300 Compatible System Handle see 092013

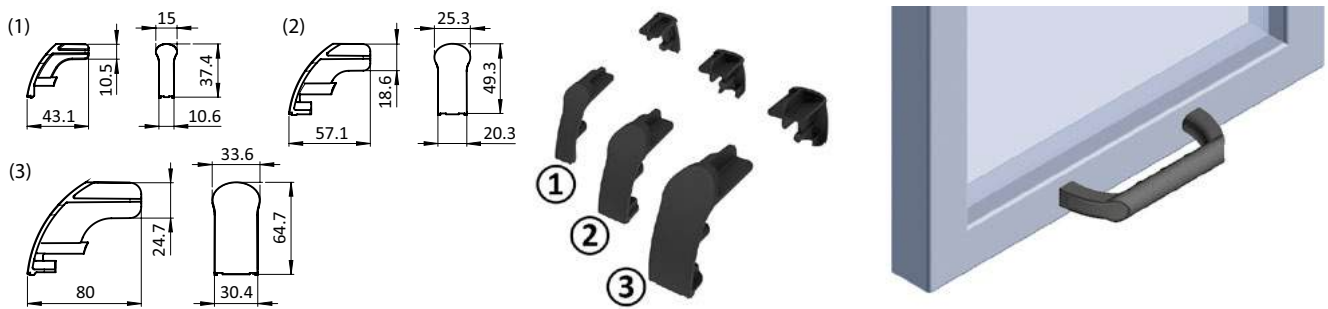
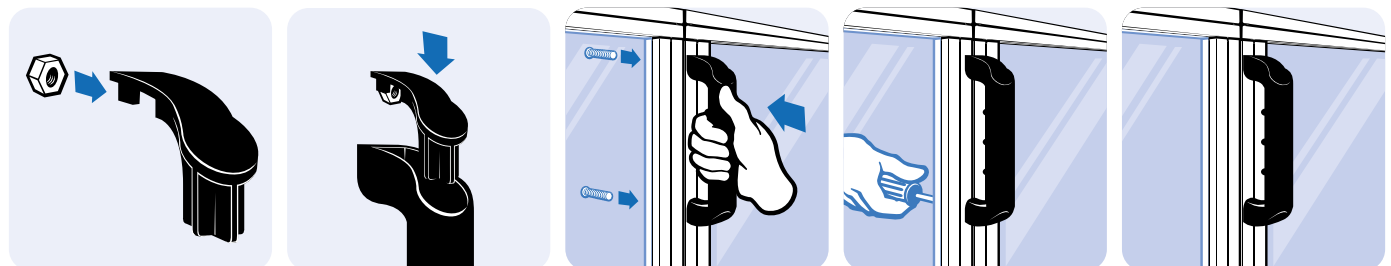
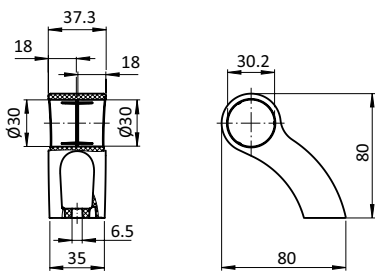


	Fig.	Version	for Nut	Weight [g]	Part #
	①	120	M6	10.6	092301
	②	160	M8	20.5	092303
	③	200	M8	50.6	092305



**SYSTEM HANDLE BENT**

<b>MODEL</b>	Plastic PA
<b>DESCRIPTION</b>	To mount on doors, flaps and aluminum profiles, can be used as an end or middle piece
<b>MATERIAL</b>	Plastic PA, glass fiber reinforced
<b>COLOR</b>	Black
<b>SET</b>	2 system handle legs 2 cover caps for screw-on point 2 cover caps for open hole in system handle leg as end piece
<b>FASTENING</b>	From the front, using M6 screws
<b>PACK QUANTITY</b>	1 set
<b>TIP</b>	Please note: 1 set = 2 pieces
<b>TIP 2</b>	Compatible Cover Cap for Comfort and System Handle (Set) see 092305



for Screw

Weight [g]

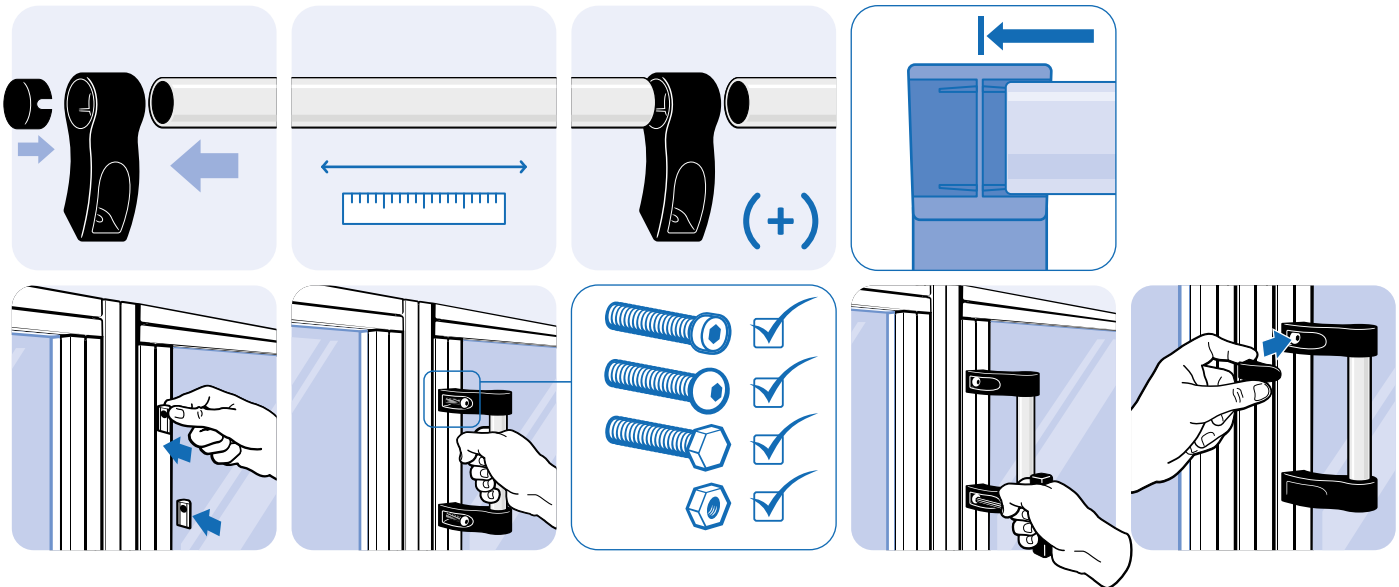
Part #

M6

118.0

092550

5

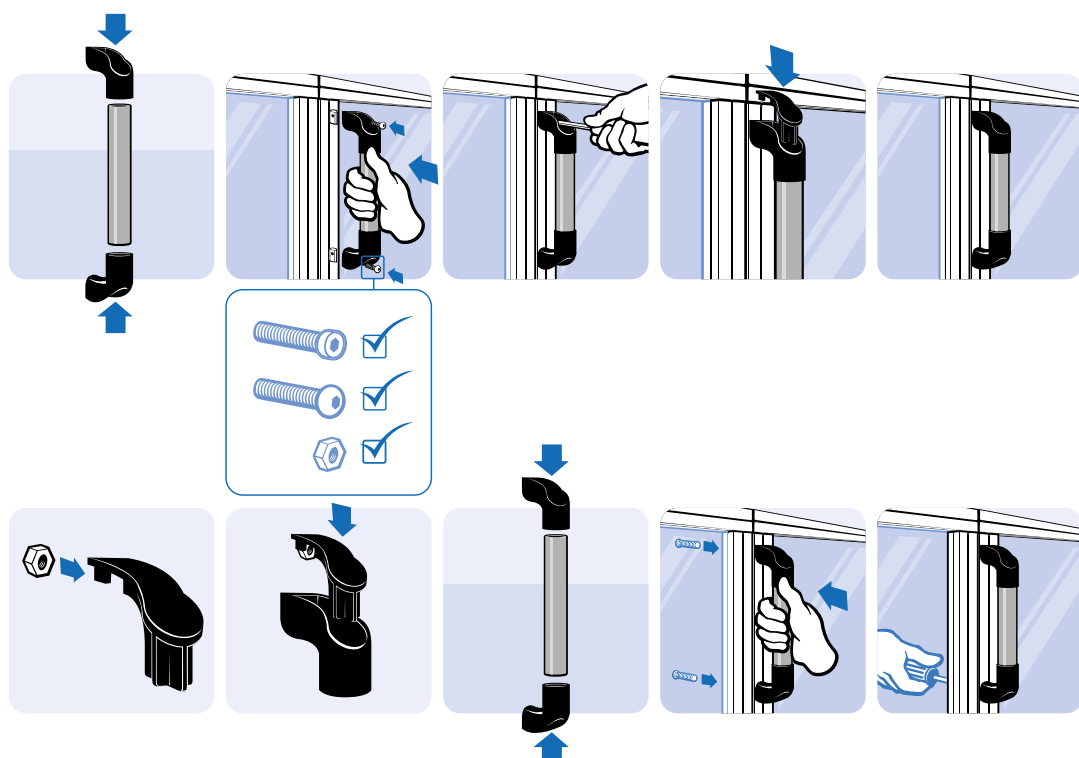


TUBES FOR SYSTEM HANDLE

<b>MODEL</b>	For combining with the end pieces
<b>DESCRIPTION</b>	To mount on doors, flaps and aluminum profiles
<b>MATERIAL</b>	Carbon fiber, aluminum, stainless steel, steel
<b>SURFACE</b>	Glossy finish, anodized, plain, plastic covered
<b>FASTENING</b>	End pieces for system handle
<b>PACK QUANTITY</b>	10 pieces
<b>SPECIALS</b>	Other surfaces, other colors on request
<b>TIP</b>	* For cut to length For the steel tube, please remove the plastic cover at the ends for installation in the end pieces



Fig.	Version	A [mm]	B [mm]	L [mm]	Weight [g]	Part #
②	Aluminum, anodized	200.0	240.8	70.0	17.0	<a href="#">092013A200</a>
②	Aluminum, anodized	300.0	340.8	170.0	42.0	<a href="#">092013A300</a>
②	Aluminum, anodized	400.0	440.8	270.0	67.0	<a href="#">092013A400</a>
②	Aluminum, anodized	500.0	540.8	370.0	91.0	<a href="#">092013A500</a>
②	Aluminum, anodized			*2000.0	490.0	<a href="#">092013A.2000</a>
③	Stainless steel			*2000.0	1400.0	<a href="#">092013E.2000</a>
④	Steel, plastic covered	400.0	440.8	270.0	203.0	<a href="#">092013S400</a>
④	Steel, plastic covered	500.0	540.8	370.0	279.0	<a href="#">092013S500</a>
④	Steel, plastic covered			*2000.0	1500.0	<a href="#">092013S.2000</a>



**STRIP HANDLE (SET)**

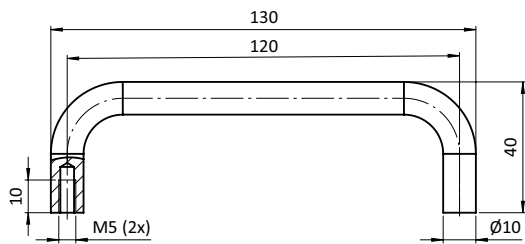
<b>MODEL</b>	Aluminum, anodized
<b>DESCRIPTION</b>	To mount on doors, flaps and aluminum profiles
<b>MATERIAL</b>	Strip handle: Aluminum Cover caps: Plastic PA, glass fiber reinforced
<b>SURFACE</b>	Strip handle: Anodized
<b>COLOR</b>	Cover caps: Black
<b>SET</b>	1 strip handle in length L [mm], 1 cover cap left, 1 cover cap right
<b>FASTENING</b>	From the front with holes drilled into the slot base, from the back with T-slot nuts in the strip handle
<b>PACK QUANTITY</b>	10 pieces
<b>SPECIALS</b>	Other lengths on request
<b>TIP</b>	* Please note: You are ordering in meters! ** Please note: 1 set = 2 pieces



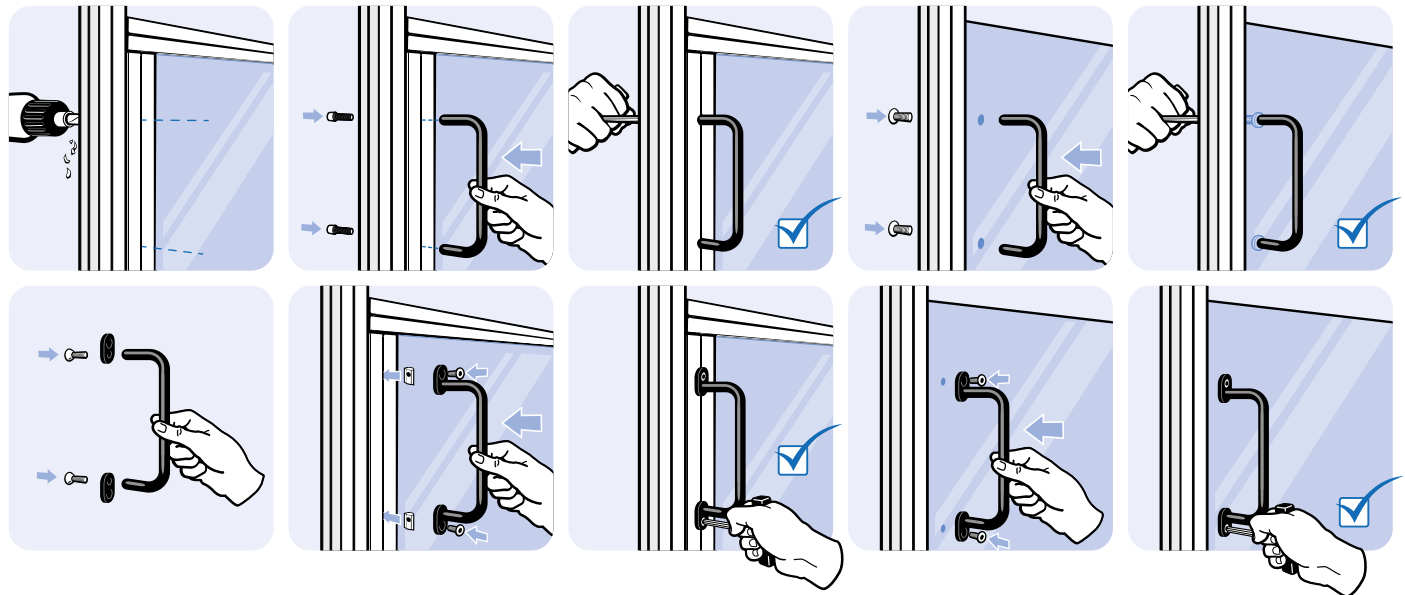
Fig.	Version	L [mm]	N	Weight [g]	Part #
①	Strip Handle*	1500.0	5	1152.0	092024
②	Set cover caps**			2.9	092021
	Strip handle 160 (set)	160.0	5	127.0	092023

**HANDLE AL 120**

<b>MODEL</b>	Aluminum, 120 mm
<b>DESCRIPTION</b>	To mount on doors, flaps and aluminum profiles
<b>MATERIAL</b>	Aluminum
<b>SURFACE</b>	Powder coated / anodized
<b>COLOR</b>	Black, aluminum color
<b>FASTENING</b>	From the back, using M5 screws; From the front with optional fastening set
<b>PACK QUANTITY</b>	1 piece
<b>TIP</b>	Compatible Fastening Set see 092330

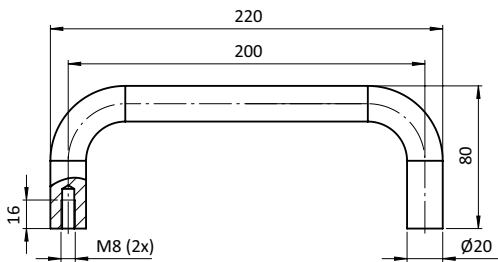


Surface	Color	Weight [g]	Profile	Part #
Powder coated	Black	36.0	I	<a href="#">092326</a>
Anodized	Alu color	36.0	I	<a href="#">092339</a>

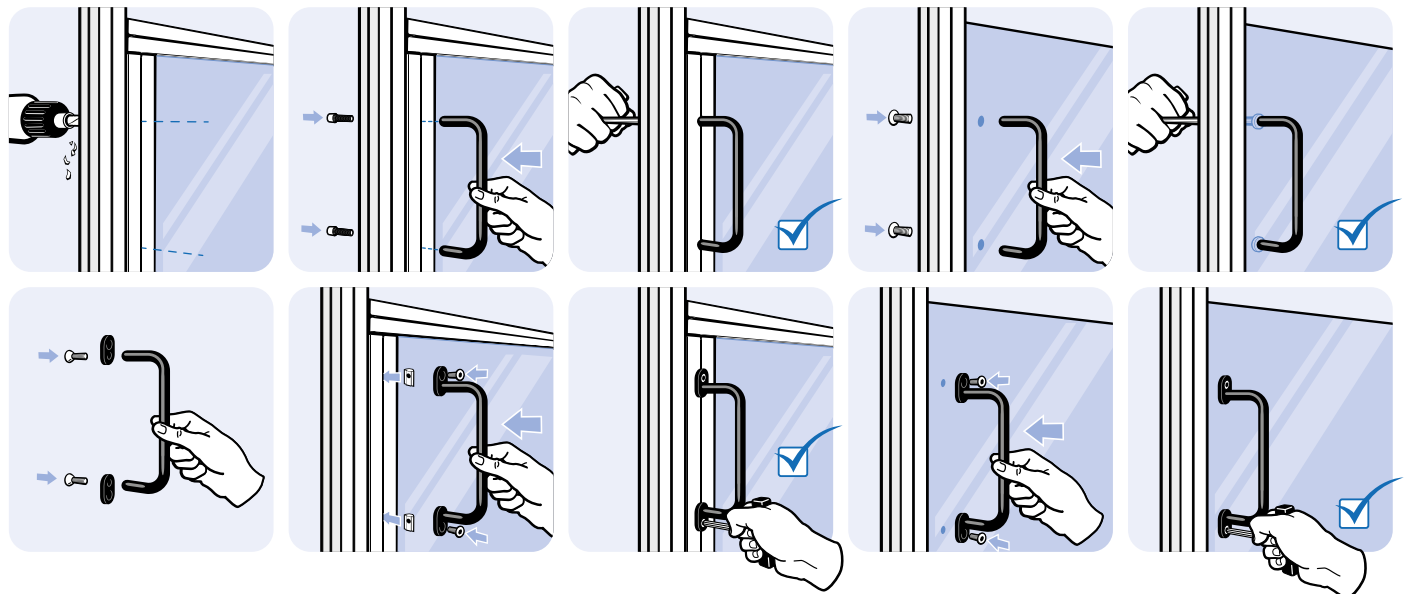


**HANDLE AL 200**

<b>MODEL</b>	Aluminum, 200 mm
<b>DESCRIPTION</b>	To mount on doors, flaps and aluminum profiles
<b>MATERIAL</b>	Aluminum
<b>SURFACE</b>	Powder coated / anodized
<b>COLOR</b>	Black, aluminum color
<b>FASTENING</b>	From the back, using M8 screws; From the front with optional fastening set
<b>PACK QUANTITY</b>	1 piece
<b>TIP</b>	Compatible Fastening Set see 092331

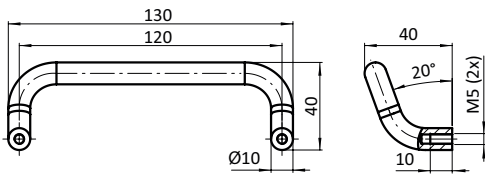


Surface	Color	Weight [g]	Profile	Part #
Powder coated	Black	261.0	I	092328
Anodized	Alu color	261.0	I	092338

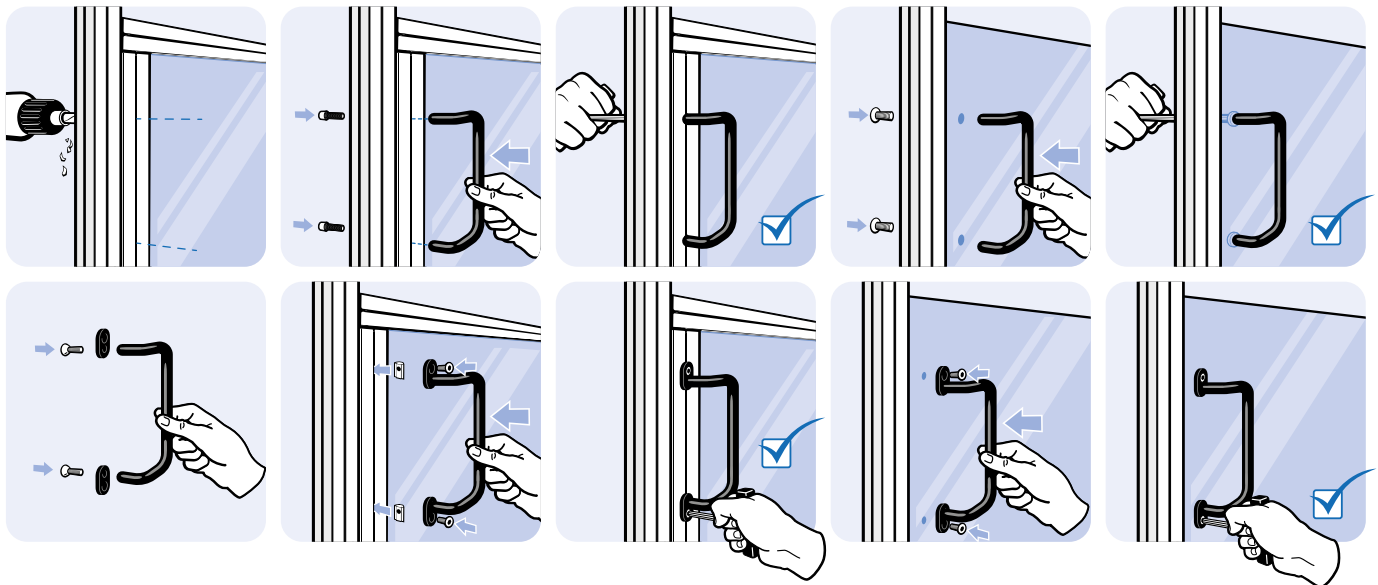


**HANDLE AL 120 BENDED**

<b>MODEL</b>	Aluminum, 120 mm
<b>DESCRIPTION</b>	To mount on doors, flaps and aluminum profiles
<b>MATERIAL</b>	Aluminum
<b>SURFACE</b>	Powder coated / anodized
<b>COLOR</b>	Black, aluminum color
<b>FASTENING</b>	From the back, using M5 screws; From the front with optional fastening set
<b>PACK QUANTITY</b>	1 piece
<b>TIP</b>	Compatible Fastening Set see 092330

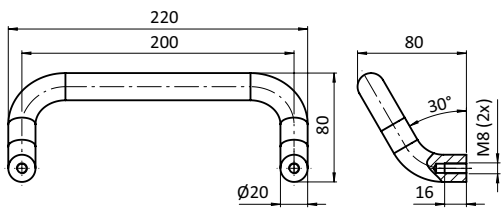


Surface	Color	Weight [g]	Profile	Part #
Powder coated	Black	44.0	I	<a href="#">092327</a>
Anodized	Alu color	44.0	I	<a href="#">092335</a>

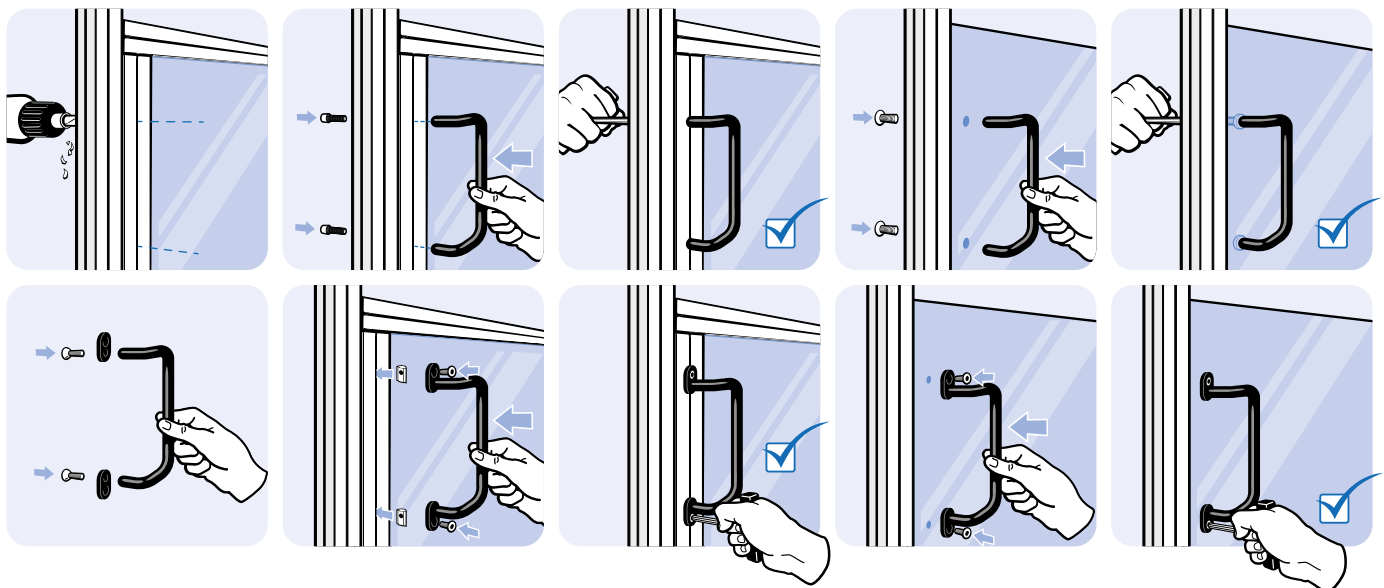


**HANDLE AL 200 BENDED**

<b>MODEL</b>	Aluminum, 200 mm
<b>DESCRIPTION</b>	To mount on doors, flaps and aluminum profiles
<b>MATERIAL</b>	Aluminum
<b>SURFACE</b>	Powder coated / anodized
<b>COLOR</b>	Black, aluminum color
<b>FASTENING</b>	From the back, using M8 screws; From the front with optional fastening set
<b>PACK QUANTITY</b>	1 piece
<b>TIP</b>	Compatible Fastening Set see 092331

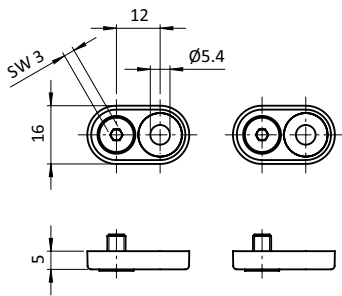


Surface	Color	Weight [g]	Profile	Part #
Powder coated	Black	314.0	I	092329
Anodized	Alu color	314.0	I	092337



**FASTENING SET FOR HANDLE AL 120**

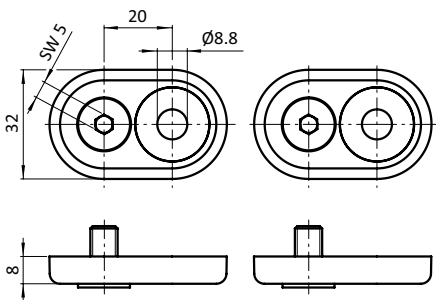
<b>MODEL</b>	Zinc die-cast, 120 mm
<b>DESCRIPTION</b>	For front mounting of the handles AL 120
<b>MATERIAL</b>	Zinc die-cast
<b>SURFACE</b>	Powder coated
<b>COLOR</b>	Black, aluminum color
<b>SET</b>	2 fastenings 2 screws DIN 7991 - M5 x 10
<b>PACK QUANTITY</b>	1 set
<b>TIP</b>	Compatible Handles AL 200 see 092326 and 092330



Color	Weight [g]	Profile	Part #
Black	24.0	I	<a href="#">092330</a>
Alu color	24.0	I	<a href="#">092334</a>

**FASTENING SET FOR HANDLE AL 200**

<b>MODEL</b>	Zinc die-cast, 200 mm
<b>DESCRIPTION</b>	For front mounting of the handles AL 200
<b>MATERIAL</b>	Zinc die-cast
<b>SURFACE</b>	Powder coated
<b>COLOR</b>	Black, aluminum color
<b>SET</b>	2 fastenings, 2 screws DIN 7991 - M8 x 18
<b>PACK QUANTITY</b>	1 set
<b>TIP</b>	Compatible Handles AL 200 see 092328 and 092329



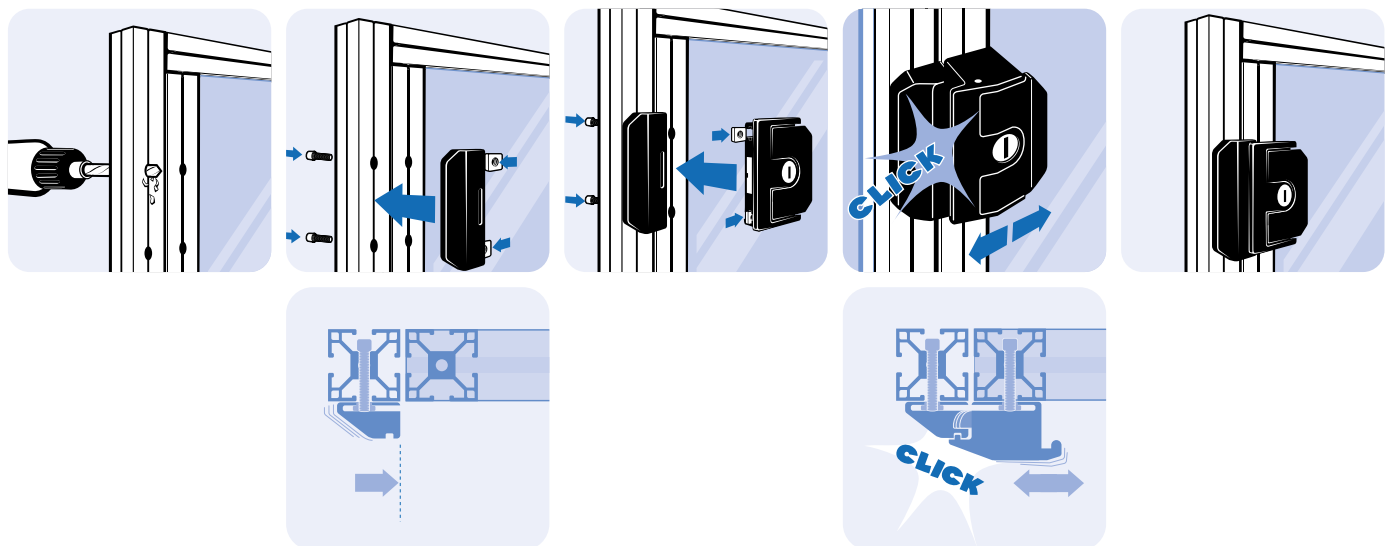
	Color	Weight [g]	Profile	Part #
	Black	141.0	I	<a href="#">092331</a>
	Alu color	141.0	I	<a href="#">092336</a>

**SLAM LATCH ZN**

<b>MODEL</b>	Zinc die-cast
<b>DESCRIPTION</b>	To securely close doors and flaps
<b>MATERIAL</b>	Zinc die-cast
<b>SURFACE</b>	Powder coated
<b>COLOR</b>	Black
<b>FASTENING</b>	From the back, using M6 screws
<b>PACK QUANTITY</b>	1 piece
<b>TIP</b>	* Universal: One key fits all slam latches Unique: Each slam latch has a different key



Lock	Weight [g]	Part #
Universal*	560.0	0957101
Unique*	560.0	0957201
without	560.0	0957301





## SLAM LATCHES COMPACT + PRO

### Everything Under Control – Slam Latches by FATH



- Modern, symmetrical **FATH** design
- Ideal for assembly on aluminum profiles
- Simple and flexible mounting without mechanical effort
- Lockable
- Sturdy aluminum housing for harsh environments
- Also available with integrated safety function
- Protection of safety doors and flaps up to Cat. 4 / PLe

### HIGHLIGHTS

**FATH** Slam Latches are multifunctional door handles for protecting safety guards such as doors and flaps on machines and installations.

The compact and symmetrical design permits simple mounting on profile rails and allows use on doors hinged on the left and right. The metal housing suitable for industrial use features a sturdy door stop and is ideal for use in a harsh environment.

**SIMPLE  
SECURE &  
PROTECT**



#### Protected from disassembly

All Slam Latches designed by **FATH** can be mounted from the front side, in particular on aluminum profiles, using T-slot nuts or hammer nuts. The cover caps attached are safe against removal as long as the latch is locked, thus preventing a unwanted disassembly of the slam latch.

# AVAILABLE IN DIFFERENT VERSIONS

## Double door? No problem for the twin version!

You have a double door with center mullion and want to lock it? Then we have the solution: The **FATH** Slam Latch Compact is also available in the twin version. This allows simultaneous and selective opening of both doors.



## Different locks to choose from

The **FATH** Slam Latch Compact is available in different versions. The following locks are available:

- without lock
- same lock
- different locks
- square lock
- double-bit lock



## Also suitable for sliding doors

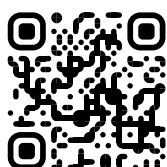
With the Slide Door Latch Compact you can also provide for the locking of sliding doors. We also offer this version with different locks in black powder-coated.



## Powder coated Versions

**FATH** Slam Latches are available as die-cast aluminum or die-cast zinc parts. The die-cast aluminum versions are also available in black powder-coated or aluminum powder-coated.

An emergency opener is also available for emergencies. With this, the latch locks can be emergency unlocked on the back.

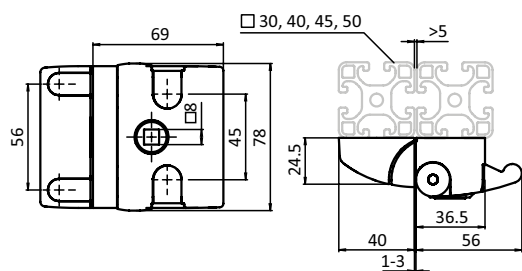


Get to know it  
better now!

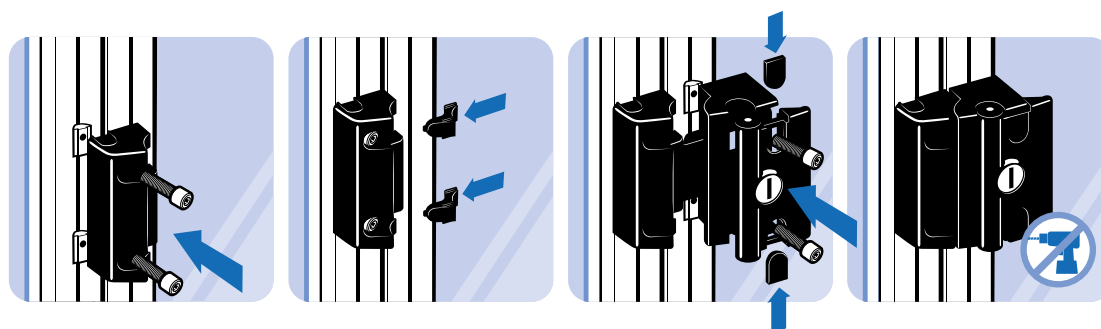
[slam-latch.fath24.com](http://slam-latch.fath24.com)

**SLAM LATCH COMPACT**

<b>MODEL</b>	Aluminum die-cast
<b>DESCRIPTION</b>	For an easy and secure latching and locking of doors and flaps, no mechanical preparation needed for the assembly; safe against disassembling in the locked position
<b>MATERIAL</b>	Aluminum die-cast
<b>SURFACE</b>	Powder coated
<b>COLOR</b>	Black, aluminum color
<b>FASTENING</b>	From the front, using M6 socket head or pan head screws
<b>PACK QUANTITY</b>	1 piece
<b>TIP</b>	* Universal: One key fits all slam latches Unique: Each slam latch has a different key; ** With double-bitted key Compatible Emergency Opener for Slam Latch see 0957409 et sq.

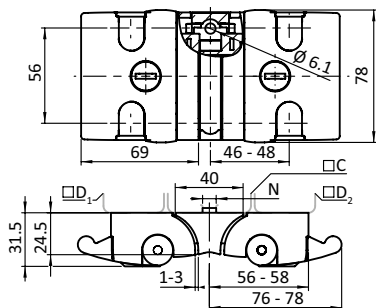


Version	Color	Lock	Weight [g]	Part #
Black powder coated	Black	Universal*	235.5	<a href="#">0957408</a>
	Black	Unique*	235.5	<a href="#">0957411</a>
	Black	without	204.0	<a href="#">0957410</a>
	Black	Square lock	220.0	<a href="#">0957431</a>
	Black	Double-bit lock**	220.0	<a href="#">0957432</a>
Alu color powder coated	Alu color	Universal*	235.5	<a href="#">0957408S01</a>
	Alu color	Unique*	235.5	<a href="#">0957411S01</a>
	Alu color	without	204.0	<a href="#">0957410S01</a>

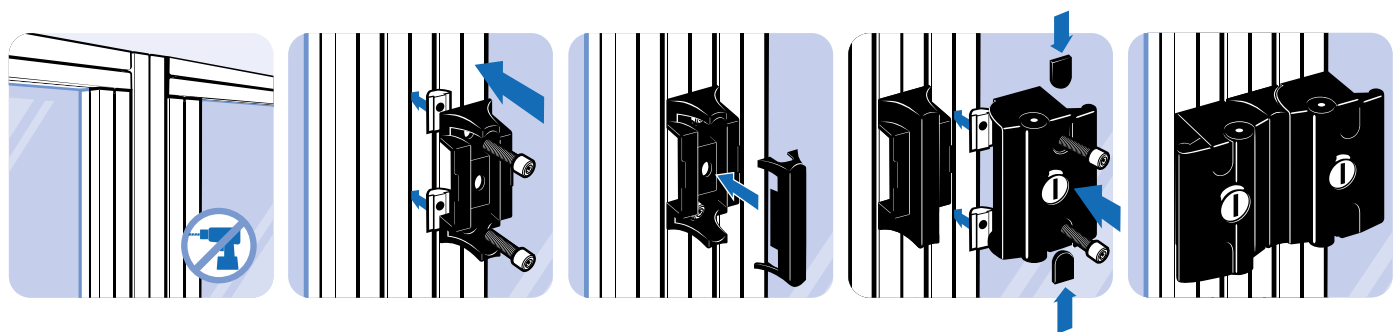


TWIN SLAM LATCH COMPACT

<b>MODEL</b>	Aluminum die-cast
<b>DESCRIPTION</b>	For an easy and secure latching and locking of doors and flaps, no mechanical preparation needed for the assembly; Safe against disassembling in the locked position; Provides selective access by use of a single post; With separate locating pins for slot 8 and slot 10
<b>MATERIAL</b>	Aluminum die-cast
<b>SURFACE</b>	Powder coated
<b>COLOR</b>	Black
<b>FASTENING</b>	From the front, using M6 socket head or pan head screws
<b>PACK QUANTITY</b>	1 piece
<b>SPECIALS</b>	Other combinations of slam latches on request
<b>TIP</b>	* Universal: One key fits all slam latches; Unique: Each slam latch has a different key Compatible Emergency Opener for Slam Latch see 0957409 et sq.

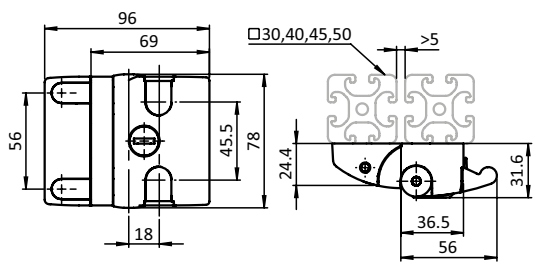


C (D1/D2) [mm]	Lock	N	Weight [g]	Part #
40 (30, 38 - 1.5", 40, 45); 45 (30, 38 - 1.5", 40, 45); 50 (30, 38 - 1.5", 40, 45); 60 (30)	Universal*	- / 8 / 10	448.0	<a href="#">0957420S01</a>
40 (30, 38 - 1.5", 40, 45); 45 (30, 38 - 1.5", 40, 45); 50 (30, 38 - 1.5", 40, 45); 60 (30)	Unique*	- / 8 / 10	448.0	<a href="#">0957420S02</a>

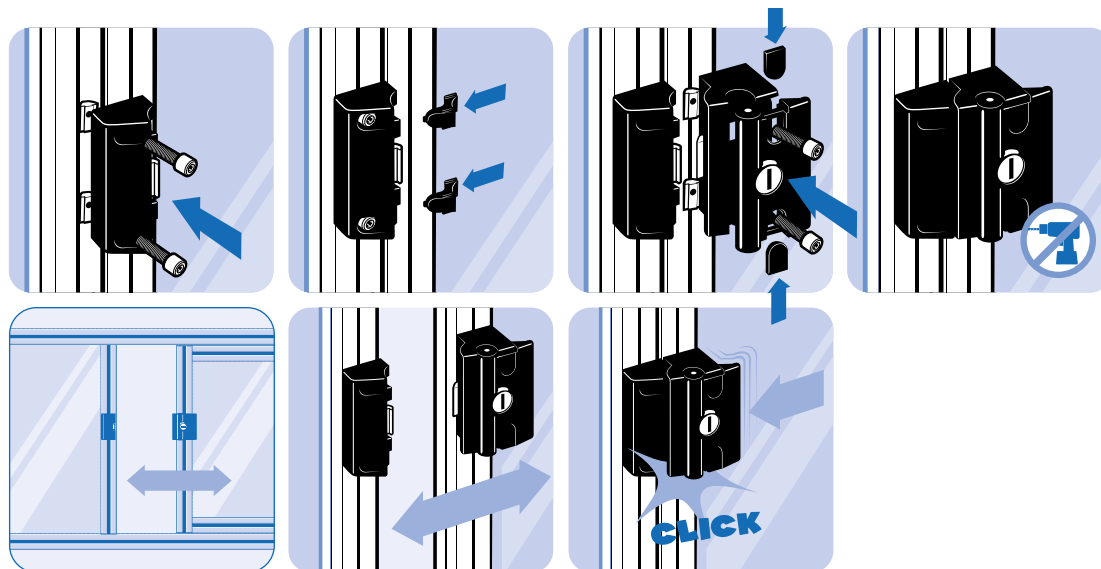


**SLIDE DOOR LATCH COMPACT**

<b>MODEL</b>	Aluminum die-cast
<b>DESCRIPTION</b>	For an easy and secure latching and locking of sliding doors, no mechanical preparation needed for the assembly; safe against disassembling in the locked position
<b>MATERIAL</b>	Aluminum die-cast
<b>SURFACE</b>	Powder coated
<b>COLOR</b>	Black
<b>FASTENING</b>	From the front, using M6 socket head or pan head screws
<b>PACK QUANTITY</b>	1 piece
<b>TIP</b>	* Universal: One key fits all slam latches Unique: Each slam latch has a different key Compatible Emergency Opener for Slam Latch with Safety Catch see 0957409S02, additional inside mounted handle recommended



Lock	Weight [g]	Part #
Universal*	246.0	<a href="#">0957415</a>
Unique*	246.0	<a href="#">0957416</a>
without	216.0	<a href="#">0957417</a>

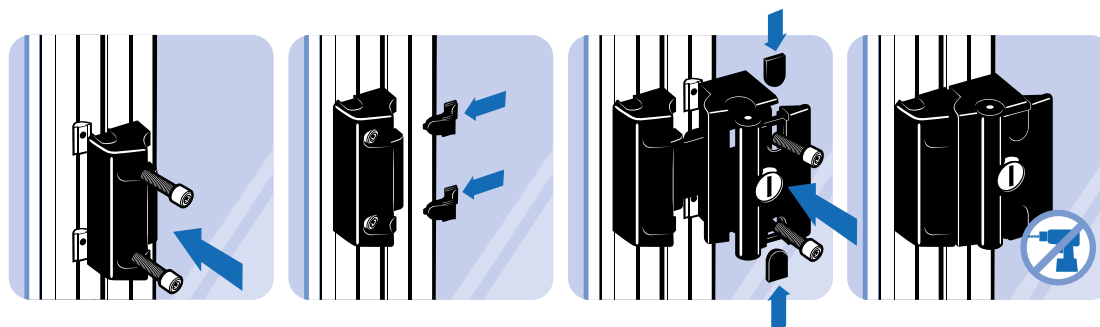


**SLAM LATCH PRO**

<b>MODEL</b>	Aluminum die-cast
<b>DESCRIPTION</b>	For an easy and secure latching and locking of doors and flaps, no mechanical preparation needed for the assembly; Safe against disassembling in the locked position
<b>MATERIAL</b>	Aluminum die-cast
<b>SURFACE</b>	Powder coated
<b>COLOR</b>	Black
<b>FASTENING</b>	From the front, using M6 socket head or pan head screws
<b>PACK QUANTITY</b>	1 piece
<b>TIP</b>	* Universal: One key fits all slam latches Unique: Each slam latch has a different key Compatible Emergency Opener for Slam Latch see 0957409 et sq.

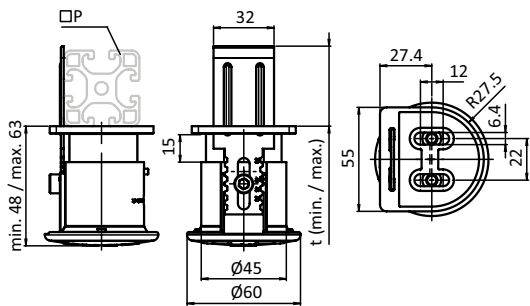


Lock	Weight [g]	Part #
Universal*	370.0	<a href="#">0957404</a>
Unique*	370.0	<a href="#">0957405</a>
without	340.0	<a href="#">0957406</a>

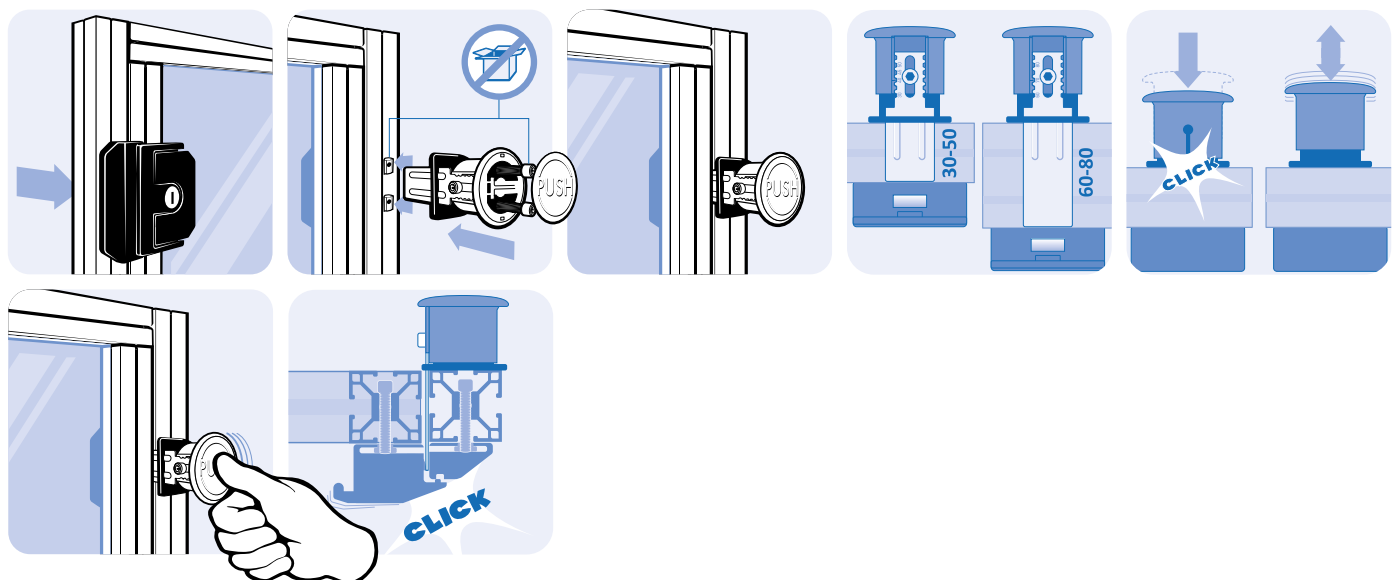


**EMERGENCY OPENER FOR SLAM LATCH**

<b>MODEL</b>	Plastic PA
<b>DESCRIPTION</b>	Inside emergency release for slam latches PRO and Compact; with or without safety catch
<b>MATERIAL</b>	Base part: Plastic PA, glass fiber reinforced Push button: Plastic PA, glass fiber reinforced Unlocking plate: Steel
<b>SURFACE</b>	Unlocking plate: Zinc plated
<b>COLOR</b>	Base part: Black Push button: Red ≈ RAL 3020
<b>FASTENING</b>	From the front, using two socket head screws DIN EN ISO 4762 (DIN 912) M6 x 20
<b>PACK QUANTITY</b>	1 piece
<b>TIP</b>	Recommendation for slide door latch Compact 0957415 et sq.: Emergency opener for slam latch with safety catch and an inside mounted handle; Not compatible with slam latch 0957101 et sq.

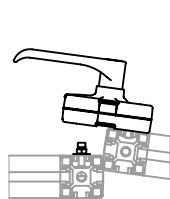
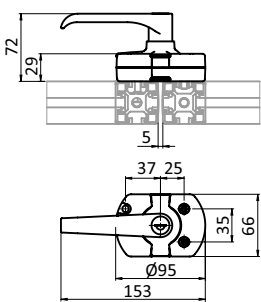


Version	t (max.) [mm]	t (min.) [mm]	P [mm]	Weight [g]	Part #
With safety catch	50	30	30-50	110.8	0957409
	80	60	60-80	115.4	0957409S03
Without safety catch	50	30	30-50	110.8	0957409S02

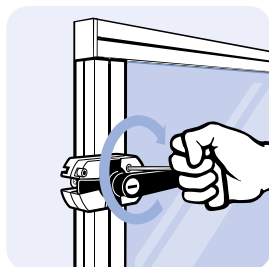
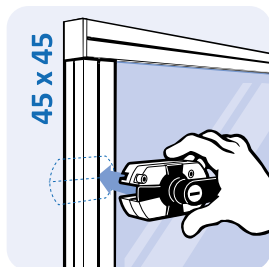
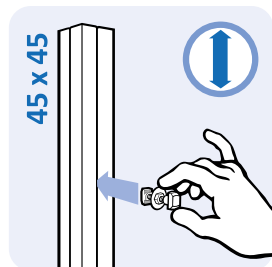


**DOOR LOCK (SET)**

<b>MODEL</b>	Aluminum die-cast
<b>DESCRIPTION</b>	For an easy and secure latching and locking of swing and sliding doors, no mechanical preparation needed for the assembly
<b>MATERIAL</b>	Housing: Aluminum die-cast Cross: Aluminum die-cast Handle: Zinc die-cast Fastening material: Steel
<b>SURFACE</b>	Housing: Lacquered Cross: Powder coated Handle: Plastic coated Fastening material: Zinc plated
<b>COLOR</b>	Housing: Alu color Cross: Lack Handle: Black
<b>SET</b>	1 door lock, 2 screws DIN EN ISO 4762 (DIN 912) - M6 x 30, 1 washer 6-FSt, 1 anchor - M6, 1 nut DIN 934 - M6, 1 washer DIN 9021 form A - 6.4, 3 hammer nut - slot 8 - M6, 3 hammer nut - slot 10 - M6
<b>PACK QUANTITY</b>	1 set
<b>TIP</b>	* Universal: One key fits all slam latches Unique: Each door lock has a different key ** With double-bitted key

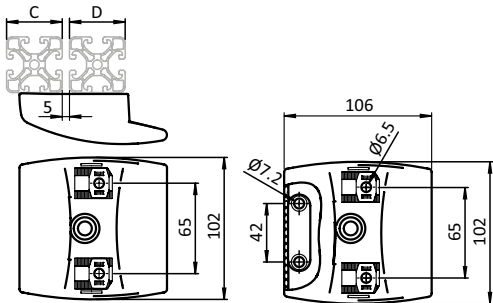


Lock	Weight [g]	Part #
Unique*	407.0	0957505
Universal*	407.0	0957504
Double-bit lock **	407.0	0957506



**MAGNETIC CATCH HANDLE COMPACT**

<b>MODEL</b>	Plastic PA
<b>DESCRIPTION</b>	Quick fastener for doors; adjustable
<b>MATERIAL</b>	Catch handle: Plastic PA, glass fiber reinforced Buffer: TPE, ≈ 90 Shore A Magnet: Neodymium Spring: Stainless steel Counter plate: Steel
<b>SURFACE</b>	Spring: Plain Counter plate: Zinc plated
<b>COLOR</b>	Catch handle: Black Buffer: Black
<b>FASTENING</b>	Catch handle: From the front with using cylinder or button head screws M6 Counter plate: From the front with countersunk M5
<b>PACK QUANTITY</b>	10 pieces
<b>SPECIALS</b>	Other colors on request



5

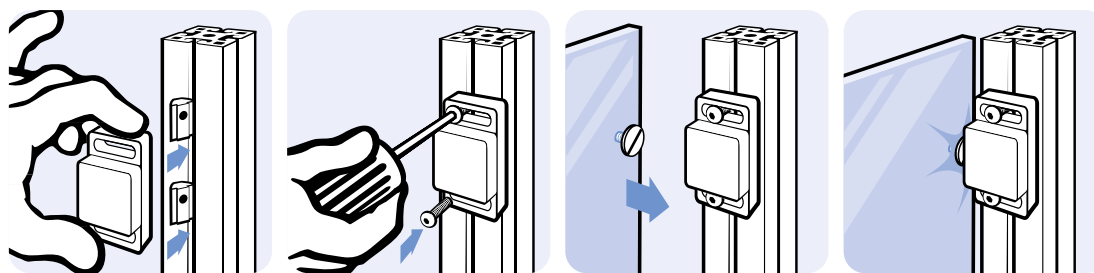
Locking Force	C (D) [mm]	Weight [g]	Part #
25 N	30 (38 - 1.5", 40, 45, 50, 60); 40 (38 - 1.5", 40, 45, 50, 60); 45 (38 - 1.5", 40, 45, 50); 50 (38 - 1.5", 40, 45, 50); 60 (30, 38 - 1.5", 40)	168.0	<b>0957601</b>

**MAGNETIC CATCH 20 (SET)**

<b>MODEL</b>	Plastic PA
<b>DESCRIPTION</b>	A quick locking device for doors, adaptable to the thickness of the panel units
<b>MATERIAL</b>	Magnetic catch: Plastic PA, glass fiber reinforced Assembly set: Steel Angle bracket: Aluminum
<b>COLOR</b>	Magnetic catch: Black
<b>SET 1</b>	1 magnetic catch 20, 1 pan head screw DIN 921 - M4 x 5
<b>SET 2</b>	1 magnetic catch 20, 1 counter plate 14 x 41 x 2 mm, 2 screws ISO 7380 - M4 x 10, 1 angle bracket
<b>FASTENING</b>	Using screws M4
<b>PACK QUANTITY</b>	10 sets
<b>SPECIALS</b>	ESD electrostatical discharging, other sizes, other colors on request

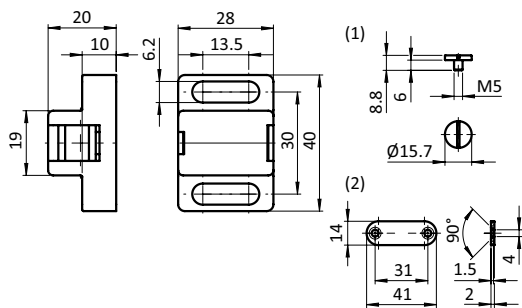


Fig.	Set	Locking Force	Weight [g]	Part #
①	Set 1	Approx. 5 N front / 3 N back	9.0	<b>093094</b>
②	Set 2	Approx. 5 N front / 3 N back	33.0	<b>093046</b>



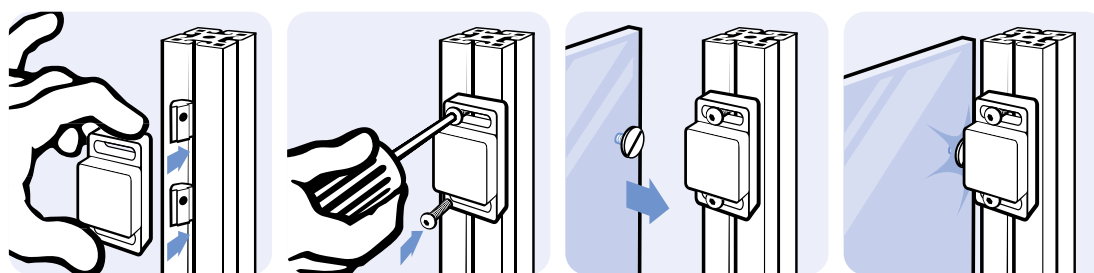
**MAGNETIC CATCH 30 (SET)**

<b>MODEL</b>	Plastic PA
<b>DESCRIPTION</b>	A quick locking device for doors, adaptable to the thickness of the panel units
<b>MATERIAL</b>	Magnetic catch: Plastic PA, glass fiber reinforced Assembly set: Steel
<b>SURFACE</b>	Assembly set: Zinc plated
<b>COLOR</b>	Magnetic catch: Black, gray
<b>SET 1</b>	1 magnetic catch 30, 1 flat head screw DIN 921 - M5 x 6
<b>SET 2</b>	1 magnetic catch 30, 1 flat head screw DIN 921 - M5 x 6, 1 counter plate 14 x 41 x 2 mm
<b>FASTENING</b>	Magnetic catch: using M6 screws Counter plate: using M4 countersunk screws
<b>PACK QUANTITY</b>	10 sets
<b>SPECIALS</b>	ESD electrostatical discharging, other sizes, other colors on request



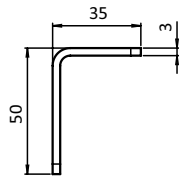
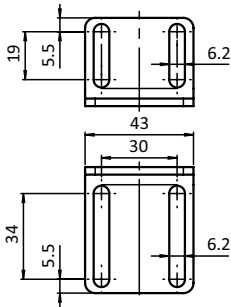
5

Color	Set	Locking Force	Weight [g]	Part #
Black	Set (2)	Approx. 20 N front / 10 N back	45.9	<a href="#">093040</a>
Gray ≈ RAL 7042	Set (2)	Approx. 20 N front / 10 N back	45.9	<a href="#">093040S09</a>
Black	Set (1)	Approx. 20 N front / 10 N back	39.0	<a href="#">093044</a>
Gray ≈ RAL 7042	Set (1)	Approx. 20 N front / 10 N back	39.0	<a href="#">093044S01</a>



**ANGLE BRACKET FOR MAGNETIC CATCH 30**

<b>MODEL</b>	Steel, zinc plated
<b>DESCRIPTION</b>	To versatile position the magnetic catch 30
<b>MATERIAL</b>	Steel
<b>SURFACE</b>	Zinc plated
<b>PACK QUANTITY</b>	10 pieces
<b>SPECIALS</b>	Other surfaces, other colors on request

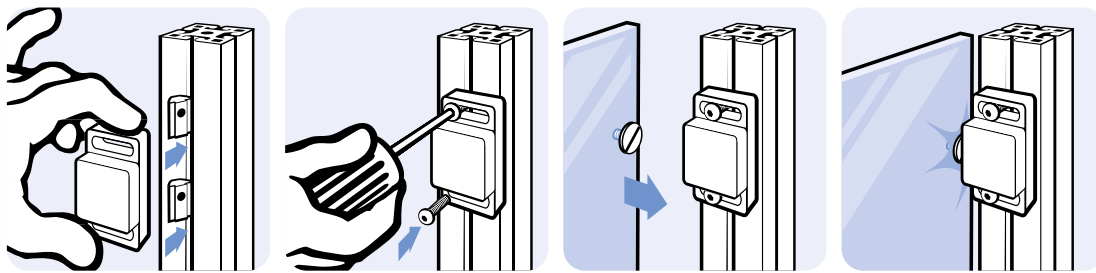


Weight [g]

Part #

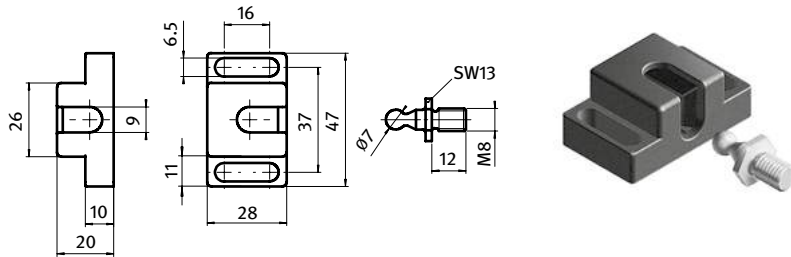
62.0

093040W



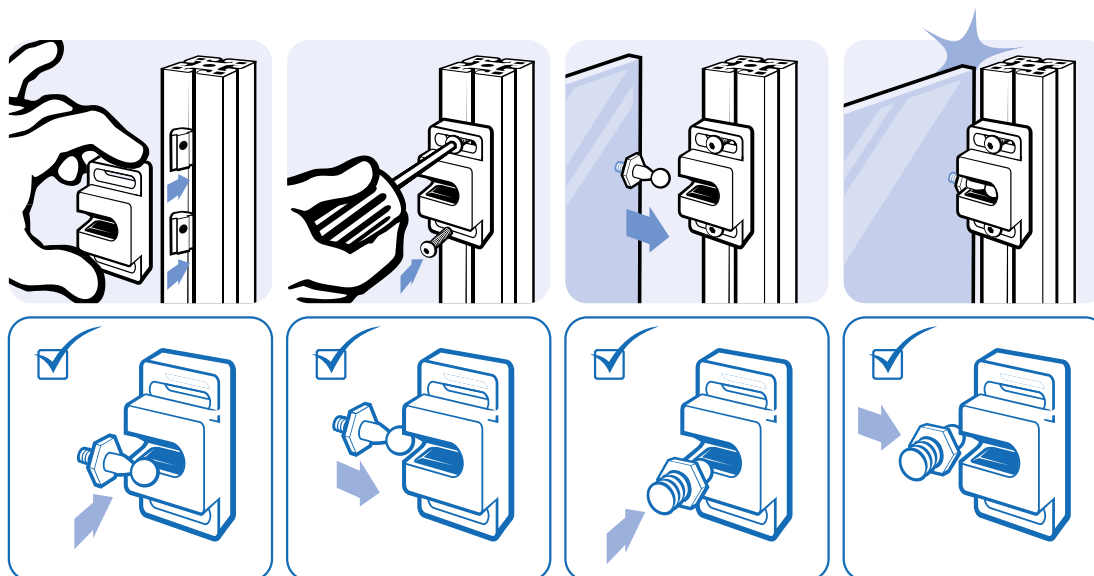
**BALL CATCH 30**

<b>MODEL</b>	Plastic PA
<b>DESCRIPTION</b>	A quick locking device for doors, adaptable to the thickness of the panel units
<b>MATERIAL</b>	Plastic PA, glass fiber reinforced
<b>COLOR</b>	Black, gray
<b>FASTENING</b>	Using screws
<b>PACK QUANTITY</b>	10 pieces
<b>SPECIALS</b>	ESD electrostatical discharging, other sizes, other colors on request



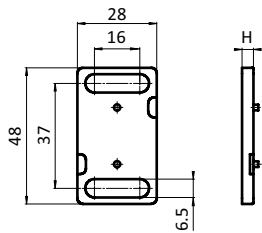
Version	Color	Locking Force	Counter Screw	Weight [g]	Part #
Light	Black	~ 40 N	Zinc plated steel	45.0	<a href="#">093045</a>
	Black	~ 40 N	Stainless steel	45.0	<a href="#">093045S03</a>
	Gray ≈ RAL 7042	~ 40 N	Zinc plated steel	45.0	<a href="#">093045S06</a>
	Gray ≈ RAL 7042	~ 40 N	Stainless steel	45.0	<a href="#">093045S07</a>
Strong	Black	~ 50 N	Zinc plated steel	45.0	<a href="#">093043</a>
	Black	~ 50 N	Stainless steel	45.0	<a href="#">093043S02</a>
	Gray ≈ RAL 7042	~ 50 N	Zinc plated steel	45.0	<a href="#">093043S03</a>
	Gray ≈ RAL 7042	~ 50 N	Stainless steel	45.0	<a href="#">093043S04</a>

5

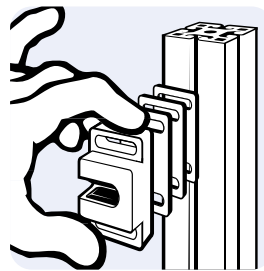


**SPACER FOR BALL CATCH 30**

<b>MODEL</b>	Plastic PA
<b>DESCRIPTION</b>	To increase the distance to the aluminum profile
<b>MATERIAL</b>	Plastic PA, glass fiber reinforced
<b>COLOR</b>	Black
<b>PACK QUANTITY</b>	10 pieces
<b>SPECIALS</b>	ESD electrostatical discharging, other sizes, other colors on request

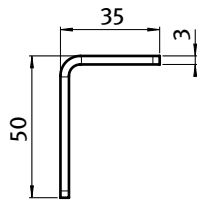
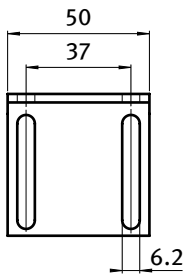


H [mm]	Weight [g]	Part #
4.0	5.0	<a href="#">093043A4</a>

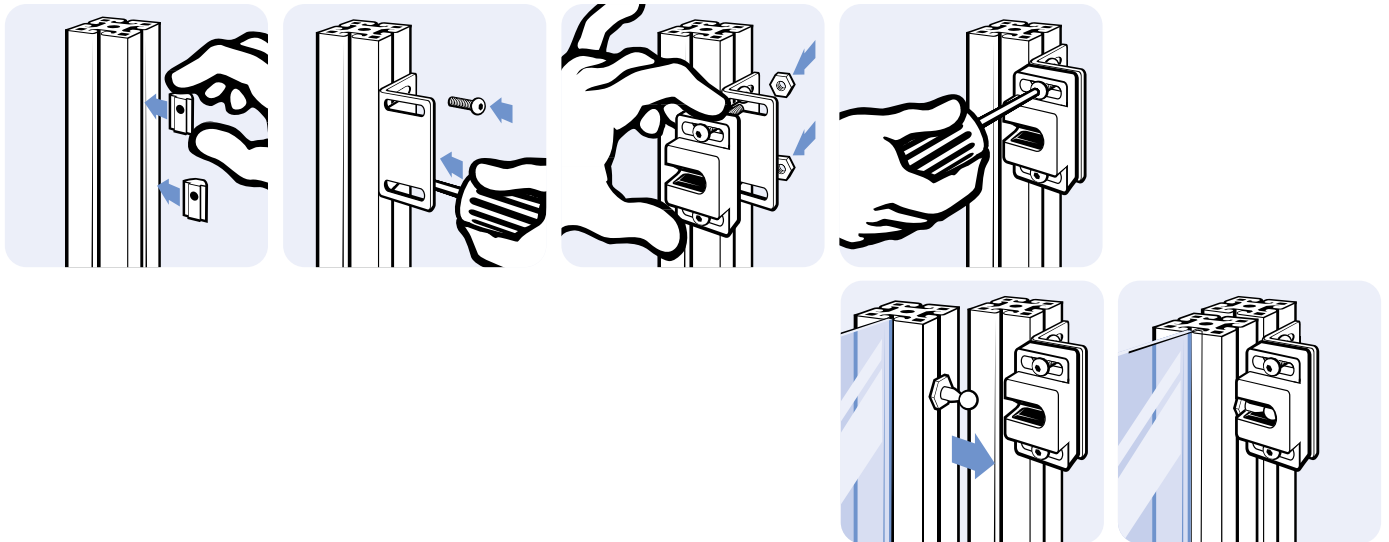


**ANGLE BRACKET FOR BALL CATCH 30**

<b>MODEL</b>	Steel, zinc plated
<b>DESCRIPTION</b>	To position the ball catch
<b>MATERIAL</b>	Steel
<b>SURFACE</b>	Zinc plated
<b>PACK QUANTITY</b>	10 pieces
<b>SPECIALS</b>	Other surfaces, other colors on request

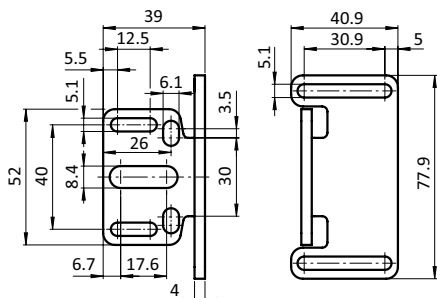


Weight [g]	Dimensions [mm]	Part #
72.4	50 x 50 x 35	<b>093043W</b>

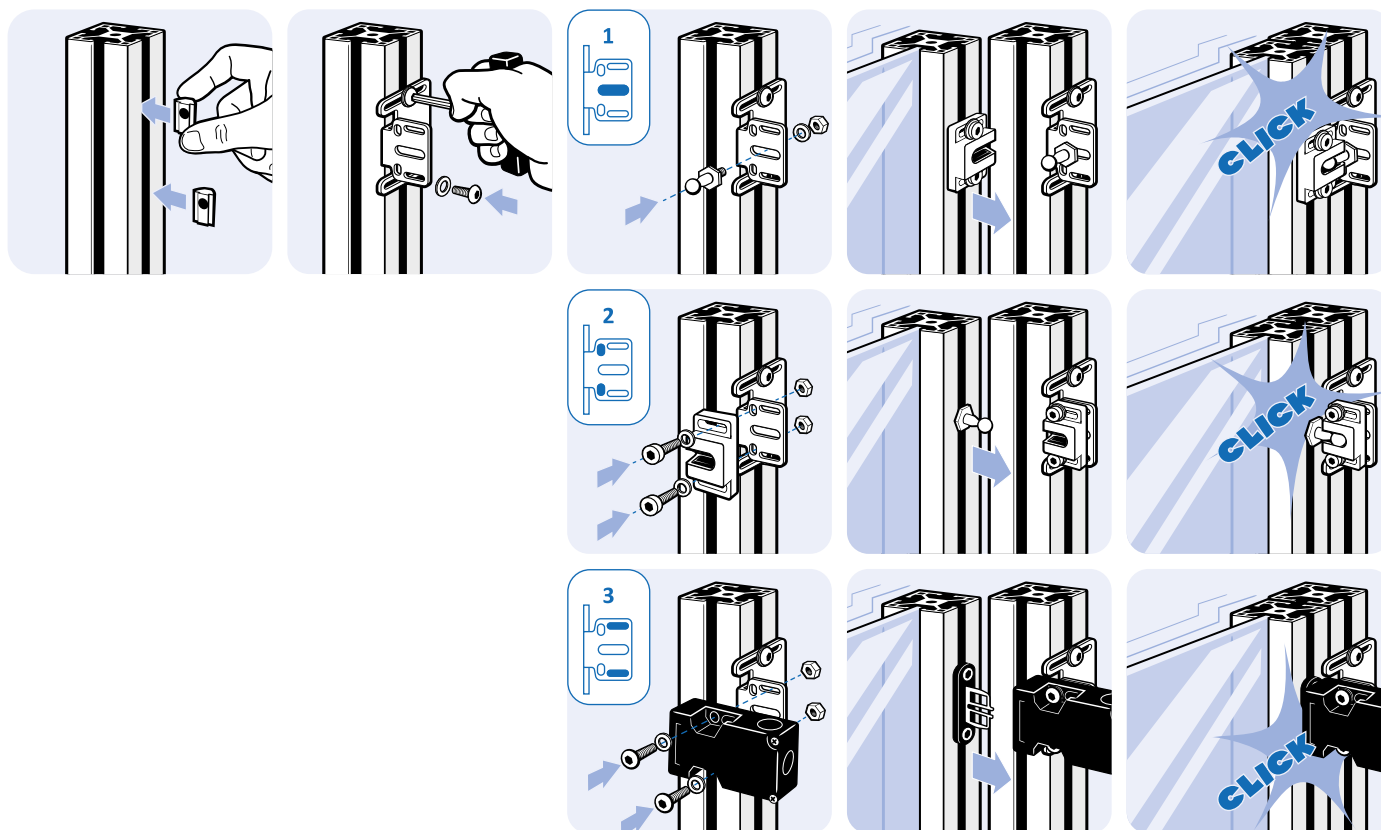


ANGLE BRACKET FOR BALL CATCH 30 / SAFETY SWITCH AZ 16

<b>MODEL</b>	Steel
<b>DESCRIPTION</b>	To flexibly position the housing or ball pin of the ball catch 30 or a safety switch Schmersal AZ 16
<b>MATERIAL</b>	Steel
<b>SURFACE</b>	Powder coated
<b>COLOR</b>	Black
<b>PACK QUANTITY</b>	10 pieces
<b>SPECIALS</b>	Other sizes, other surfaces on request
<b>TIP</b>	Compatible Ball Catch 093043, 093043S02, 093045, 093045S03

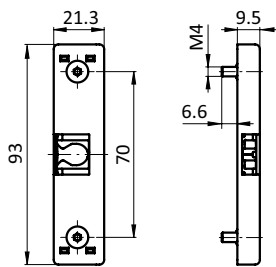


Weight [g]	Profile	Part #
111.0	I	093043WS02



**DOOR LATCH (SET)**

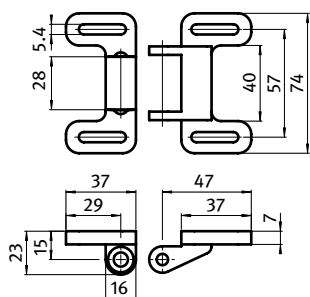
<b>MODEL</b>	Zinc die-cast
<b>DESCRIPTION</b>	Quick fastener for swing doors, to be mountend in a min. 12 mm gap between door and post
<b>MATERIAL</b>	Door latch: Zinc die-cast Cover cap: Plastic PA, glass fiber reinforced 2 countersunk screws M4: Steel
<b>SURFACE</b>	Door latch: Plain 2 countersunk screws M4: Zinc plated
<b>COLOR</b>	Black
<b>SET</b>	1 door latch, 2 screws DIN 7991 (ISO 10642) - M4 x 16
<b>PACK QUANTITY</b>	10 sets
<b>SPECIALS</b>	Other materials, other colors on request



Locking Force	Weight [g]	Part #
≈ 50 N	51.0	<b>093039</b>

**DOUBLE BALL CATCH PA**

<b>MODEL</b>	Plastic PA
<b>DESCRIPTION</b>	A quick locking device for doors and flaps with and without frame
<b>MATERIAL</b>	Housing standard version: Plastic PA, glass fibre reinforced Housing ESD electrostatical discharging version: Plastic PA, carbon fiber reinforced Ball: Stainless steel Bushing: Steel, zinc plated
<b>COLOR</b>	Black, gray
<b>FASTENING</b>	Using M5 screws
<b>PACK QUANTITY</b>	10 pieces
<b>SPECIALS</b>	Other colors on request



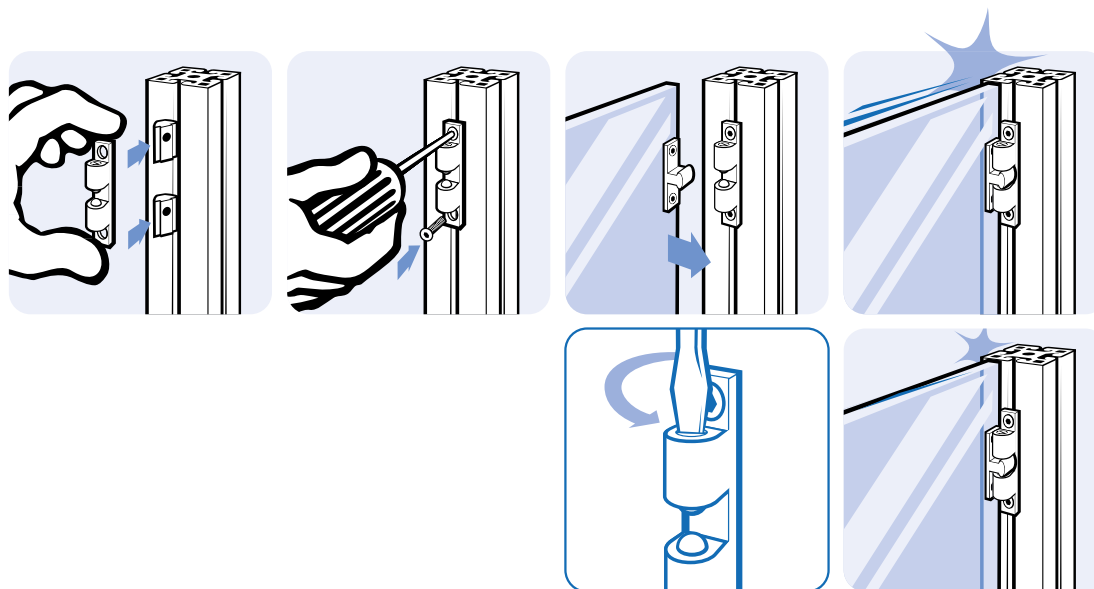
Color	ESD	Locking Force [N]	Weight [g]	Part #
Black		25	38.0	<a href="#">09304701</a>
	ESD electrostatical discharging	25	38.0	<a href="#">09304702</a>
Gray ≈ RAL 7004		25	38.0	<a href="#">09304701S02</a>

**DOUBLE BALL CATCH MS**

<b>MODEL</b>	Brass
<b>DESCRIPTION</b>	Quick catch for doors, adjustable clamping force, 2 possible positions (sideways / from the front)
<b>MATERIAL</b>	Body: Brass Threaded pin: Steel Spring: Stainless steel Ball: Stainless steel
<b>SURFACE</b>	Chrome plated
<b>COLOR</b>	Chrome
<b>FASTENING</b>	From the front, using countersunk screws
<b>PACK QUANTITY</b>	10 pieces

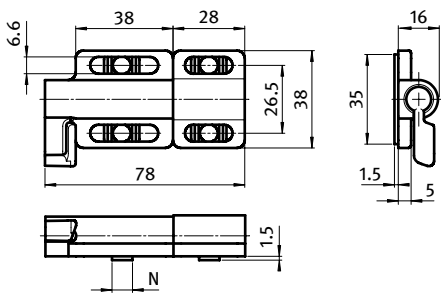


Screw	A1 [mm]	A2 [mm]	B1 [mm]	B2 [mm]	C1 [mm]	C2 [mm]	D1 [mm]	D2 [mm]	Weight [g]	Part #
M3	44.0	25.0	7.9	7.0	35.0	15.0	11.8	10.0	15.60	<a href="#">0930461</a>
M3	49.0	29.5	8.8	7.9	40.0	20.0	13.0	10.8	23.60	<a href="#">0930462</a>
M4	60.0	36.0	11.0	9.0	50.0	24.0	15.9	13.5	40.00	<a href="#">0930463</a>
M4	68.4	40.0	13.0	12.0	58.0	30.0	18.5	16.0	65.00	<a href="#">0930464</a>

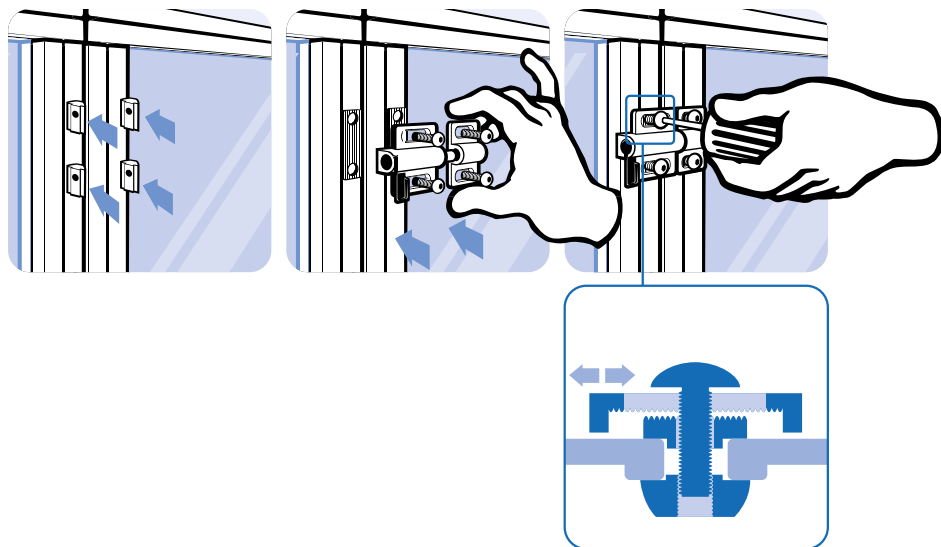


**DOOR LATCH**

<b>MODEL</b>	Zinc die-cast
<b>DESCRIPTION</b>	For easy closing of doors and flaps, with spring-loaded clamp; including separate slot fixation strips
<b>MATERIAL</b>	Housing: Zinc die-cast Pull handle: Plastic PA, Bolt: Stainless steel
<b>SURFACE</b>	Powder coated
<b>COLOR</b>	Housing: Alu color Handle: Black
<b>PACK QUANTITY</b>	10 pieces

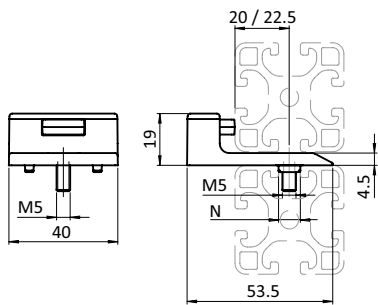


N	Weight [g]	Part #
- / 8 / 10	120.0	093082

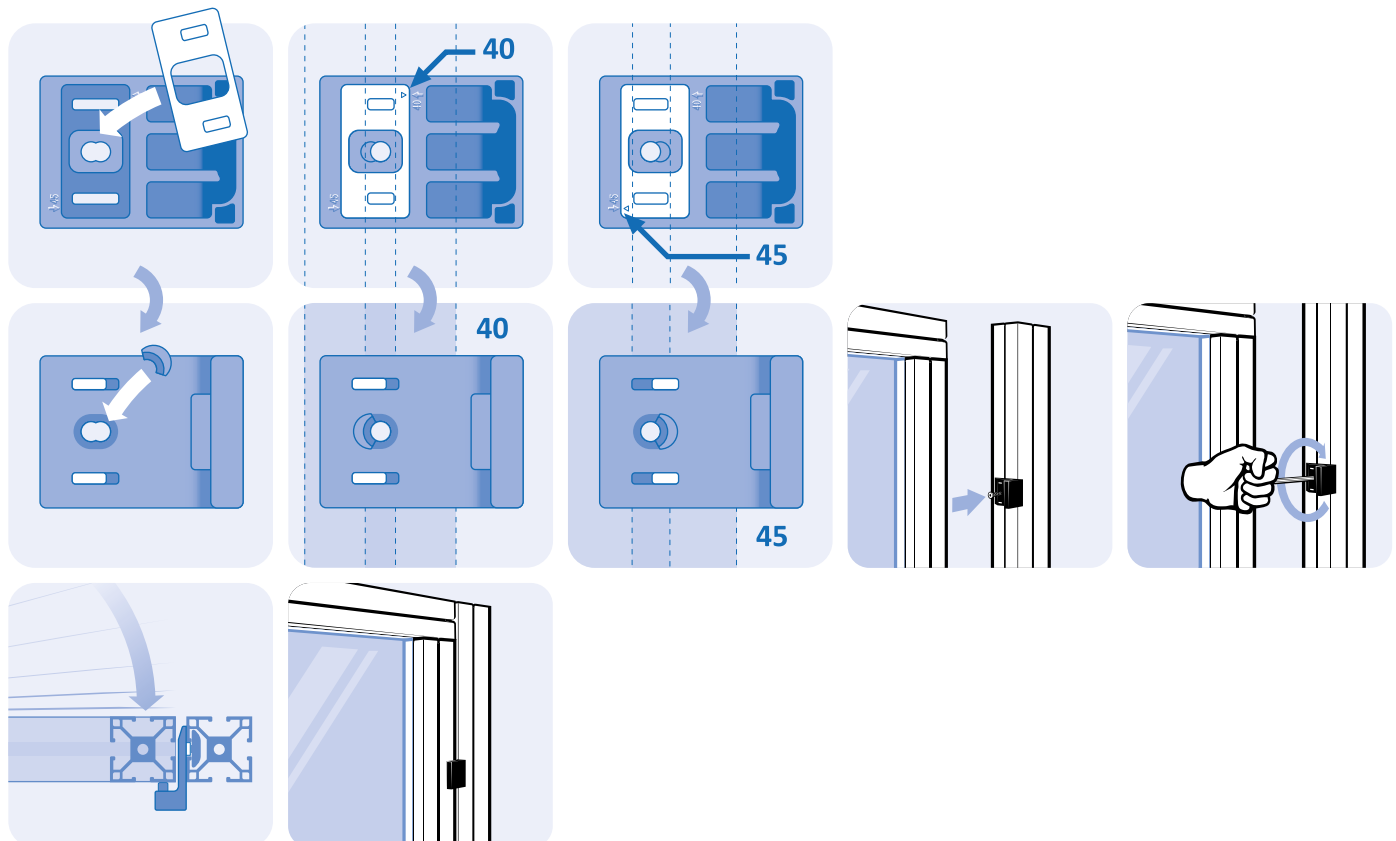


**DOOR STOP WITH EPDM DAMPER (SET)**

<b>MODEL</b>	Plastic PA
<b>DESCRIPTION</b>	Easy to mount stop for doors and flaps
<b>MATERIAL</b>	Door stop: Plastic PA, glass fiber reinforced Damper: EPDM, ≈ 70 Shore A Locating pin: Zinc die-cast Screw: Steel Fixation element: Plastic PA, glass fiber reinforced
<b>SURFACE</b>	Locating pins: Plain Screw: Zinc plated
<b>COLOR</b>	Door stop: Black Damper: Black Fixation element: Black
<b>SET</b>	1 Door stop with EPDM Damper 1 Locating pin 1 Screw ISO 7991 - M5 x 14, 1 Fixation element
<b>PACK QUANTITY</b>	10 sets
<b>SPECIALS</b>	Other colors on request

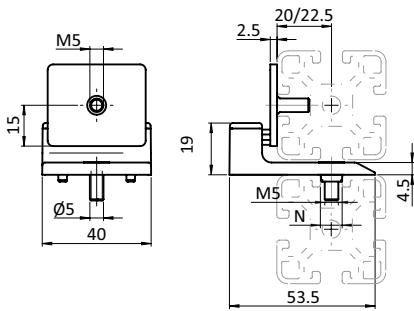


N	Weight [g]	Part #
8 / 10	26.0	093110

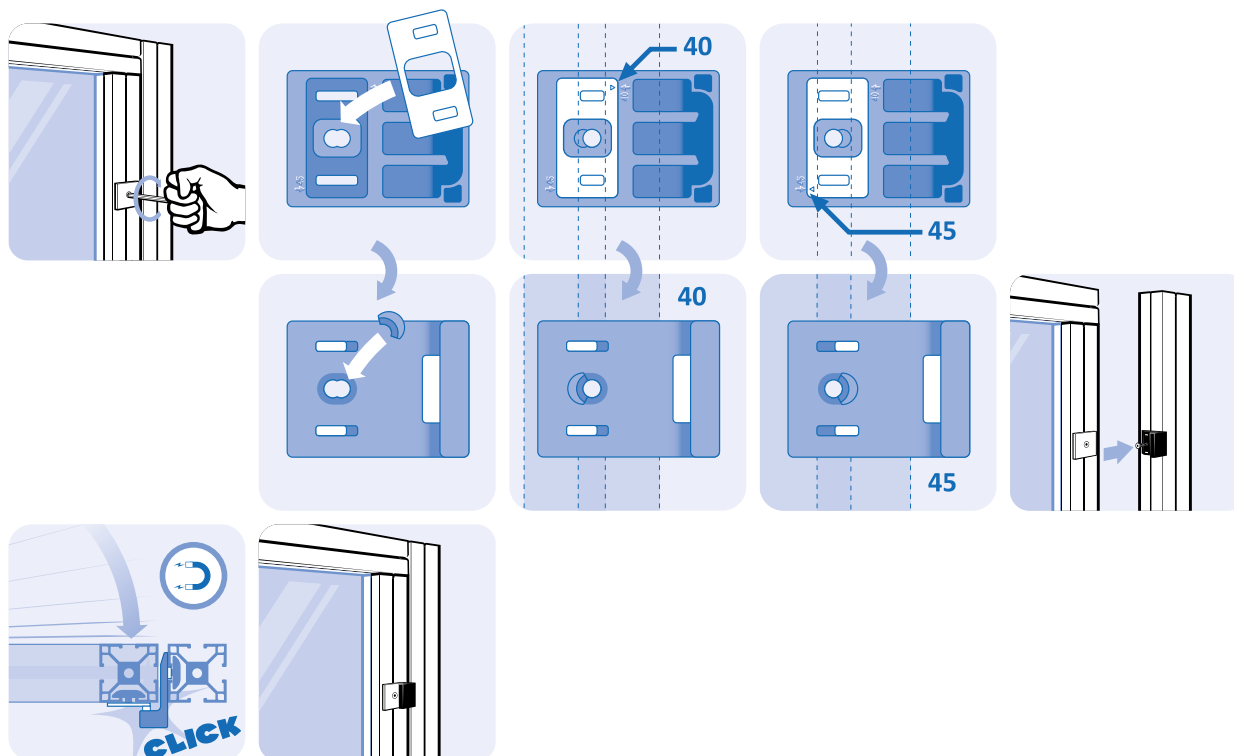


**DOOR STOP WITH MAGNETIC CATCH (SET)**

<b>MODEL</b>	Plastic PA
<b>DESCRIPTION</b>	Easy to mount stop for doors and flaps
<b>MATERIAL</b>	Door stop: Plastic PA, glass fiber reinforced Magnet: Neodym Counter Plate: Steel Locating pin: Zinc die-cast Screws: Steel Fixation element: Plastic PA, glass fiber reinforced
<b>SURFACE</b>	Magnet: Plain Counter Plate: Zinc plated Locating pins: Plain Screws: Zinc plated
<b>COLOR</b>	Door stop: Black Fixation element: Black
<b>SET</b>	1 door stop 1 counter Plate 1 locating pin 2 screws ISO 7991 - M5 x 14, 1 fixation element
<b>PACK QUANTITY</b>	10 sets
<b>SPECIALS</b>	Other colors on request



Locking Force [N]	N	Weight [g]	Part #
30	8 / 10	53.0	093111



**SEALING STRIP B**

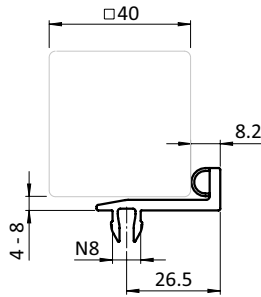
<b>MODEL</b>	Plastic PVC + TPE, Slot 8, 10
<b>DESCRIPTION</b>	To close doors sealed, flush, and non see through; with elastic sealing lip, covers the door gap
<b>MATERIAL</b>	Plastic PVC + TPE
<b>COLOR</b>	Gray ≈ RAL 7004
<b>PACK QUANTITY</b>	20 meters (10 pieces at 2 m)
<b>TIP</b>	Please note: You are ordering in meters!



Fig.	Version	Slot	Weight [g/m]	Profile	Part #
①	For profile combination 30 / 30	8	140.0	B	<a href="#">092257</a>
②	For profile combination 45 / 30	10	134.0	B	<a href="#">092258</a>
③	For profile combination 45 / 45	10	180.0	B	<a href="#">092259</a>

**SEALING STRIP I**

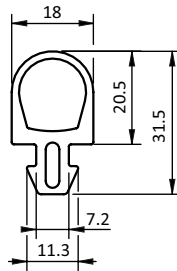
<b>MODEL</b>	Plastic PVC + TPE; slot 8
<b>DESCRIPTION</b>	To close doors sealed, flush, and non see through; with elastic sealing lip, covers the door gap
<b>MATERIAL</b>	Plastic PVC + TPE
<b>COLOR</b>	Gray ≈ RAL 7042
<b>PACK QUANTITY</b>	20 meters (10 pieces at 2 m)
<b>TIP</b>	Please note: You are ordering in meters!



Slot	Weight [g/m]	Profile	Part #
8	239.0	I	<a href="#">092264</a>

**SEALING PROFILE SLOT 8 - 4.5 / 18 X 20**

<b>MODEL</b>	Plastic NBR, slot 8
<b>DESCRIPTION</b>	To close lifting and sliding doors sealed and non see through, can be used as stop; reduces the gap width of safety fences and partition walls
<b>MATERIAL</b>	Plastic NBR, ≈ 70 Shore A
<b>COLOR</b>	Black
<b>PACK QUANTITY</b>	20 meters (spool)
<b>TIP</b>	Please note: You are ordering in meters!



Slot	Weight [g/m]	Profile	Part #
8	252.0	I	092273

