

1

2

3

4

5

6

SLIDERS AND ROLLERS

7

8

9

10

11

12

13

14

SLIDERS AND ROLLERS

| | | | | | |
|-------------------------------------------------------------------------------------|------------------------------------------------------------------|-----|-------------------------------------------------------------------------------------|--------------------------------------------------------------------|-----|
|  | PROFILE SLIDER ZN 40 X 80 (SET) | 790 |  | SLIDING DOOR GUIDE INSERT FOR FRAME CORNER CONNECTOR 18 X 32 (SET) | 808 |
|  | PROFILE SLIDER ZN 40 X 80 LOOSE BEARING (SET) | 791 |  | BEARING UNIT PA 1 ROLLER FOR C-RAIL-PROFILE I SLOT Ø 14 | 809 |
|  | PROFILE SLIDER ZN 40 X 80 FIXED BEARING (SET) | 792 |  | BEARING UNIT 1 ROLLER SHAFT Ø 14 FOR C-RAIL-PROFILE I | 810 |
|  | PROFILE SLIDER ZN 40 X 80 WITH LOCKING LEVER (SET) | 793 |  | BEARING UNIT 3 ROLLERS SHAFT Ø 14 FOR C-RAIL-PROFILE I | 811 |
|  | PROFILE SLIDER ZN 40 X 80 LOOSE BEARING WITH LOCKING LEVER (SET) | 794 |  | BEARING KIT PA 1 ROLLER SLOT Ø 14 FOR C-SLIDE PROFILE I (SET) | 812 |
|  | PROFILE SLIDER ZN 40 X 80 FIXED BEARING WITH LOCKING LEVER (SET) | 795 |  | BEARING KIT 1 ROLLER SHAFT Ø 14 FOR C-SLIDE PROFILE I (SET) | 813 |
|  | PROFILE SLIDER ZN 40 X 80 WITH CAM LEVER (SET) | 796 |  | BEARING KIT 3 ROLLERS SHAFT Ø 14 FOR C-SLIDE PROFILE I (SET) | 814 |
|  | PROFILE SLIDER ZN 40 X 80 LOOSE BEARING WITH CAM LEVER (SET) | 797 |  | PANEL SLIDER | 815 |
|  | PROFILE SLIDER ZN 40 X 80 FIXED BEARING WITH CAM LEVER (SET) | 798 |  | TROLLEY (SET) | 816 |
|  | PROFILE SLIDER FLATS | 799 |  | TROLLEY 40 FOR OVERHEAD C-RAIL, WITH MOUNTING PLATE | 817 |
|  | PROFILE SLIDER CENTER RIDGE | 800 |  | ROLLER Ø 19 | 818 |
|  | PROFILE SLIDER CENTER SLOT | 801 |  | ROLLER Ø 29 | 819 |
|  | PROFILE SLIDER 8 + 10 | 802 |  | ROLLER Ø 39 | 820 |
|  | LIFT DOOR GUIDE (SET) | 803 |  | ROLLER Ø 47 | 821 |
|  | FOLDING DOOR ELEMENT (SET) | 804 |  | ROLLER Ø 58 | 822 |
|  | T-SLOT SLIDER (SET) | 805 |  | ROLLER FOR SHAFTS Ø 10 | 823 |
|  | SLIDING DOOR GUIDE FOR CLAMP PROFILE | 806 |  | ROLLER FOR SHAFTS Ø 14 | 824 |
|  | SLIDING DOOR GUIDE SET 40 / 45 | 807 |  | BEARING UNIT 1 ROLLER ECCENTRIC SHAFT Ø 14 | 827 |



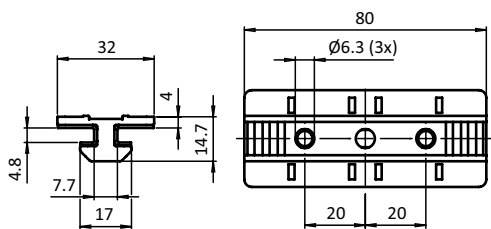
**BEARING UNIT 1 ROLLER CENTRIC SHAFT
Ø 14** 828



**WIPER AND LUBRICATOR Ø 14 FOR ROLLER
PROFILE I SLOT 8 (SET)** 829

PROFILE SLIDER ZN 40 X 80 (SET)

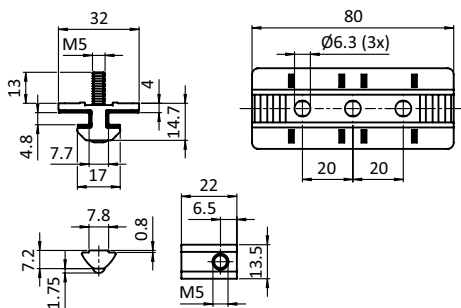
| | |
|----------------------|--------------------------------------------------------------------------------------------------------------------------------|
| MODEL | Slot 8 |
| DESCRIPTION | To guide slidingly profiles with slot 8, delivered with hexagon nuts M6 for the fixation of add-on elements |
| MATERIAL | Sliding carriage: Zinc die-cast Slide shoe: Plastic POM Fixation: Steel |
| SURFACE | Sliding carriage: Zinc plated Fixation: Zinc plated |
| COLOR | Slide shoe: Natural |
| SET | 1 sliding carriage, 2 slide shoes, 2 hexagon nuts DIN 439 B - M6 |
| PACK QUANTITY | 10 sets |
| TIP | Compatible Profile Sliders ZN 40 x 80 sets with assembly set for loose bearing and fixed bearing see 093PS0840L and 093PS0840F |



| Weight [g] | Profile | Part # |
|------------|---------|---------------------------|
| 77.0 | I | 093PS0840 |

PROFILE SLIDER ZN 40 X 80 LOOSE BEARING (SET)

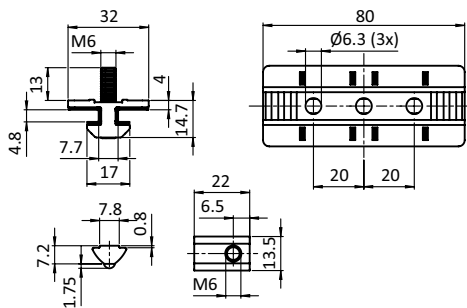
| | |
|----------------------|------------------------------------------------------------------------------------------------------------------------------------------------------------------------------------------------------------------------------------------------------------------------------------------------|
| MODEL | Slot 8 |
| DESCRIPTION | To guide slidingly profiles with slot 8, loose bearing* |
| MATERIAL | Sliding carriage: Zinc die-cast Slide shoe: Plastic POM Fixation: Steel O-ring: EPDM |
| SURFACE | Sliding carriage: Zinc plated Fixation: Zinc plated |
| COLOR | Slide shoe: Natural O-ring: Black |
| SET | 1 sliding carriage, 2 slide shoes, 2 button head screws ISO 7380 - M5 x 25, 2 O-rings DIN 3771 - 5 x 1.5, 2 T-slot nuts - slot 8 - M5 |
| PACK QUANTITY | 10 sets |
| TIP | * Profile tracks with several profile slides ZN 40 x 80 need to be executed as a combination of a loose bearing (L) and a fixed bearing (F). This way, shape tolerances can be compensated and easy movability is provided.; Compatible Profile Slider ZN 40 x 80 Fixed Bearing see 093PS0840F |



| Version | Weight [g] | Profile | Part # |
|---------------|------------|---------|----------------------------|
| Loose bearing | 101.0 | I | 093PS0840L |

PROFILE SLIDER ZN 40 X 80 FIXED BEARING (SET)

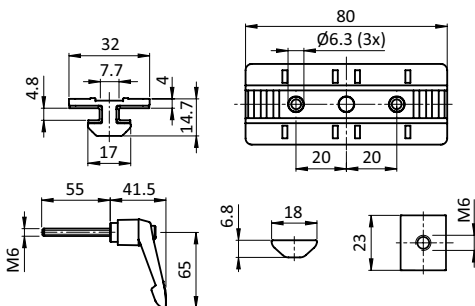
| | |
|----------------------|-------------------------------------------------------------------------------------------------------------------------------------------------------------------------------------------------------------------------------------------------------------------------------------------------|
| MODEL | Slot 8 |
| DESCRIPTION | To guide slidingly profiles with slot 8, fixed bearing* |
| MATERIAL | Sliding carriage: Zinc die-cast Slide shoe: Plastic POM Fixation: Steel O-ring: EPDM |
| SURFACE | Sliding carriage: Zinc plated Fixation: Zinc plated |
| COLOR | Slide shoe: Natural O-ring: Black |
| SET | 1 sliding carriage, 2 slide shoes, 2 button head screws ISO 7380 - M6 x 25, 2 O-rings DIN 3771 - 5 x 1.5, 2 T-slot nuts - slot 8 - M6 |
| PACK QUANTITY | 10 sets |
| TIP | * Profile tracks with several profile sliders ZN 40 x 80 need to be executed as a combination of a loose bearing (L) and a fixed bearing (F). This way, shape tolerances can be compensated and easy movability is provided.; Compatible Profile Slider ZN 40 x 80 loose bearing see 093PS0840L |



| Version | Weight [g] | Profile | Part # |
|---------------|------------|---------|----------------------------|
| Fixed bearing | 105.0 | I | 093PS0840F |

PROFILE SLIDER ZN 40 X 80 WITH LOCKING LEVER (SET)

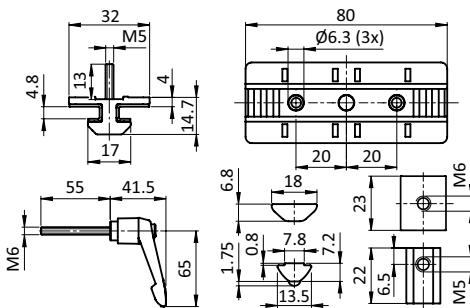
| | |
|----------------------|----------------------------------------------------------------------------------------------------------------------------------------------------------------------------------------------------------------------------------------------------------------------------------------------------|
| MODEL | Slot 8 |
| DESCRIPTION | To guide slidingly profiles with slot 8; the additional clamping feature for the slide carriage extends the range of applications, e.g as adjustable end stop; Retention force at maximum tightening torque(15 Nm) 600 N; including hexagon nuts M6 for the attachment of additional components |
| MATERIAL | Sliding carriage: Zinc die-cast Slide shoe: Plastic POM Fixation: Steel Clamp lever handle: Plastic, glass fiber reinforced Clamp lever mechanics: Steel |
| SURFACE | Sliding carriage: Zinc plated Slide shoe: Zinc plated Clamp lever mechanics: Oxide finish |
| COLOR | Slide shoe: Natural Clamp lever handle: Black |
| SET | 1 sliding carriage, 2 slide shoes, 1 clamp lever with external thread M6 x 55*, 1 special T-slot nut - slot 8 - M6, 1 shim DIN 9021 6.4 mm, 2 hexagon nuts DIN 439 B - M6 |
| PACK QUANTITY | 10 sets |
| TIP | * Use of the M6 clamp lever: 40 mm profile + 40 mm profile, thread length: 55 mm Cut to length of the M6 clamp lever, e.g.: 40 mm profile + 20 mm profile, cut thread length to: 35 mm 40 mm profile + 10 mm panel, cut thread length to: 25 mm |



| Version | Weight [g] | Profile | Part # |
|------------------|------------|---------|------------------------------|
| With clamp lever | 136.0 | I | 093PS0840S01 |

PROFILE SLIDER ZN 40 X 80 LOOSE BEARING WITH LOCKING LEVER (SET)

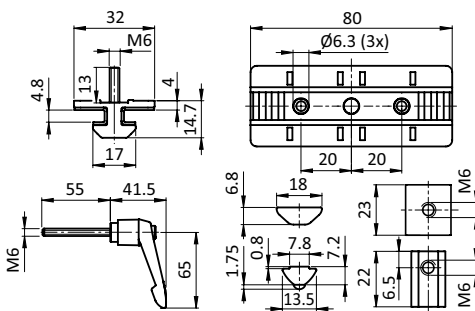
| | |
|----------------------|------------------------------------------------------------------------------------------------------------------------------------------------------------------------------------------------------------------------------------------------------------------------------------------------------------------------------------------------------|
| MODEL | Slot 8 |
| DESCRIPTION | To guide slidingly profiles with slot 8, loose bearing*, the additional clamping feature for the slide carriage extends the range of applications, e.g as adjustable end stop; retention force at maximum tightening torque (15 Nm) 600 N |
| MATERIAL | Sliding carriage: Zinc die-cast Slide shoe: Plastic POM Fixation: Steel Clamp lever handle: Plastic, glass fiber reinforced Clamp lever mechanics: Steel O-ring: EPDM |
| SURFACE | Sliding carriage: Zinc plated Slide shoe: Zinc plated Clamp lever mechanics: Oxide finish |
| COLOR | Slide shoe: Natural Clamp lever handle: Black O-ring: Black |
| SET | 1 sliding carriage, 2 slide shoes, 1 clamp lever with external thread M6 x 55**, 1 special T-slot nut - slot 8 - M6, 1 shim DIN 9021 6.4 mm, 2 button head screws ISO 7380 - M5 x 25, 2 O-rings DIN 3771 - 5 x 1.5, 2 T-slot nuts - slot 8 - M5 |
| PACK QUANTITY | 10 sets |
| TIP | * Profile tracks with several profile slides ZN 40 x 80 need to be executed as a combination of a loose bearing (L) and a fixed bearing (F). This way, shape tolerances can be compensated and easy movability is provided. Compatible Profile Slider ZN 40 x 80 Loose bearing see 093PS0840L Fixed bearing with clamp lever see 093PS0840FS01 |
| TIP 2 | ** Use of the M6 clamp lever: 40 mm profile + 40 mm profile, thread length: 55 mm Cut to length of the M6 clamp lever, e.g.: 40 mm profile + 20 mm profile, cut thread length to: 35 mm 40 mm profile + 10 mm panel, cut thread length to: 25 mm |



| Version | Weight [g] | Profile | Part # |
|--------------------------------|------------|---------|----------------------|
| Loose bearing with clamp lever | 160.0 | I | 093PS0840LS01 |

PROFILE SLIDER ZN 40 X 80 FIXED BEARING WITH LOCKING LEVER (SET)

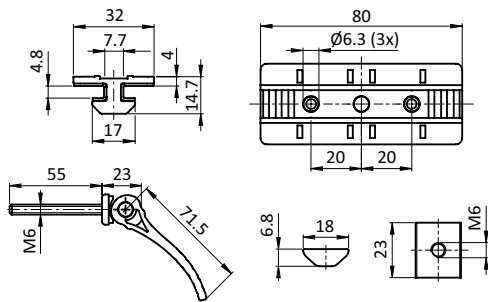
| | |
|----------------------|------------------------------------------------------------------------------------------------------------------------------------------------------------------------------------------------------------------------------------------------------------------------------------------------------------------------------------------------------|
| MODEL | Slot 8 |
| DESCRIPTION | To guide slidingly profiles with slot 8, fixed bearing*; the additional clamping feature for the slide carriage extends the range of applications, e.g as adjustable end stop; retention force at maximum tightening torque (15 Nm) 600 N |
| MATERIAL | Sliding carriage: Zinc die-cast Slide shoe: Plastic POM Fixation: Steel Clamp lever handle: Plastic, glass fiber reinforced Clamp lever mechanics: Steel O-ring: EPDM |
| SURFACE | Sliding carriage: Zinc plated Slide shoe: Zinc plated Clamp lever mechanics: Oxide finish |
| COLOR | Slide shoe: Natural Clamp lever handle: Black O-ring: Black |
| SET | 1 sliding carriage, 2 slide shoes, 1 clamp lever with external thread M6 x 55**, 1 special T-slot nut - slot 8 - M6, 1 shim DIN 9021 6.4 mm, 2 button head screws ISO 7380 - M6 x 25, 2 O-rings DIN 3771 - 5 x 1.5, 2 T-slot nuts - slot 8 - M6 |
| PACK QUANTITY | 10 sets |
| TIP | * Profile tracks with several profile slides ZN 40 x 80 need to be executed as a combination of a loose bearing (L) and a fixed bearing (F). This way, shape tolerances can be compensated and easy movability is provided. Compatible Profile Slider ZN 40 x 80 Loose bearing see 093PS0840L Loose bearing with clamp lever see 093PS0840LS01 |
| TIP 2 | ** Use of the M6 clamp lever: 40 mm profile + 40 mm profile, thread length: 55 mm Cut to length of the M6 clamp lever, e.g.: 40 mm profile + 20 mm profile, cut thread length to: 35 mm 40 mm profile + 10 mm panel, cut thread length to: 25 mm |



| Version | Weight [g] | Profile | Part # |
|--------------------------------|------------|---------|-------------------------------|
| Fixed bearing with clamp lever | 164.0 | I | 093PS0840FS01 |

PROFILE SLIDER ZN 40 X 80 WITH CAM LEVER (SET)

| | |
|----------------------|---------------------------------------------------------------------------------------------------------------------------------------------------------------------------------------------------------------------------------------------------|
| MODEL | Slot 8 |
| DESCRIPTION | To guide slidingly profiles with slot 8, the additional clamping feature for the slide carriage extends the range of applications, e.g as quickly adjustable end stop; including hexagon nuts M6 for the attachment of additional components |
| MATERIAL | Sliding carriage: Zinc die-cast Slide shoe: Plastic POM Fixation: Steel Cam lever handle: Plastic, glass fiber reinforced Cam lever mechanics: Steel |
| SURFACE | Sliding carriage: Zinc plated Slide shoe: Zinc plated Cam lever mechanics: Zinc plated |
| COLOR | Slide shoe: Natural Cam lever handle: Black |
| SET | 1 sliding carriage, 2 slide shoes, 1 cam lever with external thread M6 x 55*, 1 special T-slot nut - slot 8 - M6, 2 hexagon nuts DIN 439 B - M6 |
| PACK QUANTITY | 10 sets |
| TIP | * Use of the M6 cam lever: 40 mm profile + 40 mm profile, thread length: 55 mm Cut to length of the M6 cam lever, e.g.: 40 mm profile + 20 mm profile, cut thread length to: 35 mm 40 mm profile + 10 mm panel, cut thread length to: 25 mm |

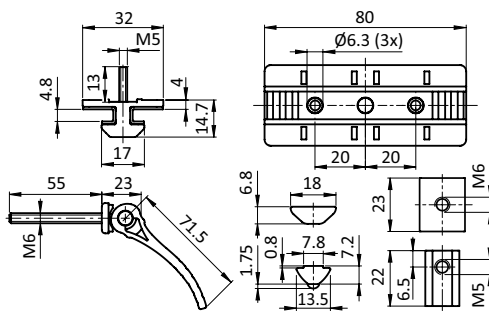


| Version | Weight [g] | Profile | Part # |
|-----------------|------------|---------|------------------------------|
| Witch cam lever | 127.0 | I | 093PS0840S02 |

PROFILE SLIDER ZN 40 X 80 LOOSE BEARING WITH CAM LEVER (SET)

| | |
|----------------------|-------------------------------------------------------------------------------------------------------------------------------------------------------------------------------------------------------------------------------------------------------------------------------------------------------------------------------------------------|
| MODEL | Slot 8 |
| DESCRIPTION | To guide slidingly profiles with slot 8, loose bearing*, the additional clamping feature for the slide carriage extends the range of applications, e.g as quickly adjustable end stop |
| MATERIAL | Sliding carriage: Zinc die-cast Slide shoe: Plastic POM Fixation: Steel Cam lever handle: Plastic, glass fiber reinforced Cam lever mechanics: Steel O-ring: EPDM |
| SURFACE | Sliding carriage: Zinc plated Slide shoe: Zinc plated Cam lever mechanics: Zinc plated |
| COLOR | Slide shoe: Natural Cam lever handle: Black O-ring: Black |
| SET | 1 sliding carriage, 2 slide shoes, 1 cam lever with external thread M6 x 55**, 1 special T-slot nut - slot 8 - M6, 2 button head screws ISO 7380 - M5 x 25, 2 O-rings DIN 3771 - 5 x 1.5, 2 T-slot nuts - slot 8 - M5 |
| PACK QUANTITY | 10 sets |
| TIP | * Profile tracks with several profile slides ZN 40 x 80 need to be executed as a combination of a loose bearing (L) and a fixed bearing (F). This way, shape tolerances can be compensated and easy movability is provided. Compatible Profile Slider ZN 40 x 80 Fixed Bearing see 093PS0840F Fixed bearing with cam lever see 093PS0840FS02 |

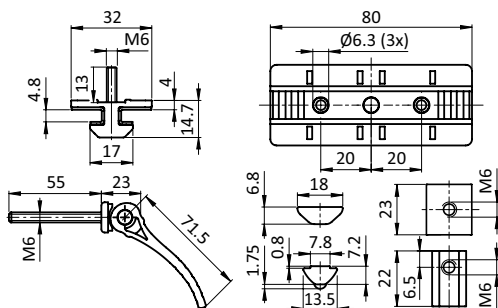
TIP 2 ** Use of the M6 cam lever:
40 mm profile + 40 mm profile, thread length: 55 mm
Cut to length of the M6 cam lever, e.g.:
40 mm profile + 20 mm profile, cut thread length to: 35 mm
40 mm profile + 10 mm panel, cut thread length to: 25 mm



| Version | Weight [g] | Profile | Part # |
|------------------------------|------------|---------|-------------------------------|
| Loose bearing with cam lever | 151.0 | I | 093PS0840LS02 |

PROFILE SLIDER ZN 40 X 80 FIXED BEARING WITH CAM LEVER (SET)

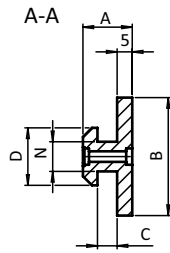
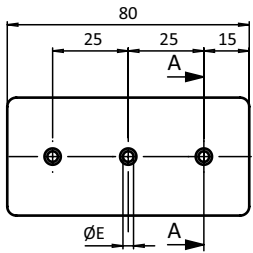
| | |
|----------------------|------------------------------------------------------------------------------------------------------------------------------------------------------------------------------------------------------------------------------------------------------------------------------------------------------------------------------------------------------|
| MODEL | Slot 8 |
| DESCRIPTION | To guide slidingly profiles with slot 8, fixed bearing*, the additional clamping feature for the slide carriage extends the range of applications, e.g as quickly adjustable end stop |
| MATERIAL | Sliding carriage: Zinc die-cast Slide shoe: Plastic POM Fixation: Steel Cam lever handle: Plastic, glass fiber reinforced Cam lever mechanics: Steel O-ring: EPDM |
| SURFACE | Sliding carriage: Zinc plated Slide shoe: Zinc plated Cam lever mechanics: Zinc plated |
| COLOR | Slide shoe: Natural Cam lever handle: Black O-ring: Black |
| SET | 1 sliding carriage, 2 slide shoes, 1 cam lever with external thread M6 x 55**, 1 special T-slot nut - slot 8 - M6, 2 button head screws ISO 7380 - M6 x 25, 2 O-rings DIN 3771 - 5 x 1.5, 2 T-slot nuts - slot 8 - M6 |
| PACK QUANTITY | 10 sets |
| TIP | * Profile tracks with several profile slides: ZN 40 x 80 need to be executed as a combination of a loose bearing (L) and a fixed bearing (F). This way, shape tolerances can be compensated and easy movability is provided, Compatible Profile Slider ZN 40 x 80 Loose bearing see 093PS0840L, Loose bearing with cam lever see 093PS0840LS02 |
| TIP 2 | ** Use of the M6 cam lever: 40 mm profile + 40 mm profile, thread length: 55 mm Cut to length of the M6 cam lever, e.g.: 40 mm profile + 20 mm profile, cut thread length to: 35 mm 40 mm profile + 10 mm panel, cut thread length to: 25 mm |



| Version | Weight [g] | Profile | Part # |
|------------------------------|------------|---------|---------------|
| Fixed bearing with cam lever | 155.0 | I | 093PS0840FS02 |

PROFILE SLIDER FLATS

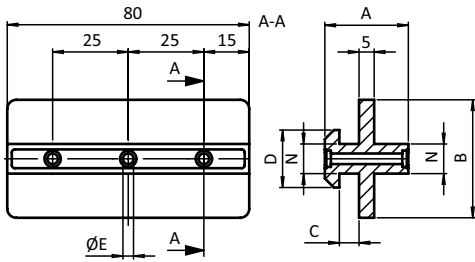
| | |
|----------------------|----------------------------------------------------------------------------------------------|
| MODEL | Slot 6, 8, 10 |
| DESCRIPTION | To guide slidingly profiles with slot; economic and wear-resistant solution, e.g. for panels |
| MATERIAL | Plastic POM |
| SURFACE | Natural |
| FASTENING | With sheet-metal screws |
| PACK QUANTITY | 10 pieces |



| A [mm] | D [mm] | B [mm] | C [mm] | E [mm] | N | Weight [g] | Profile | Part # |
|--------|--------|--------|--------|--------|----|------------|---------|----------------------------|
| 9.8 | 11.5 | 17.0 | 2.3 | 2.8 | 6 | 13.0 | B | 093SM06S02 |
| 11.5 | 15.0 | 26.0 | 3.0 | 2.8 | 8 | 22.0 | B | 093SM08S02 |
| 16.3 | 19.0 | 39.0 | 6.5 | 3.5 | 10 | 37.0 | B | 093SM10S02 |

PROFILE SLIDER CENTER RIDGE

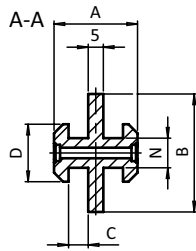
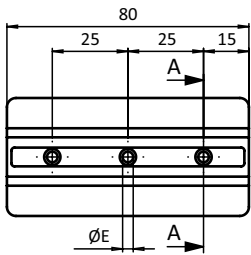
| | |
|----------------------|--------------------------------------------------------------------------------------------------------|
| MODEL | Slot 10 |
| DESCRIPTION | To guide slidingly profiles with slot 10; economic and wear-resistant solution, e.g. for sliding doors |
| MATERIAL | Plastic POM |
| SURFACE | Natural |
| FASTENING | With sheet-metal screws |
| PACK QUANTITY | 10 pieces |



| A [mm] | D [mm] | B [mm] | C [mm] | E [mm] | N | Weight [g] | Profile | Part # |
|--------|--------|--------|--------|--------|----|------------|---------|----------------------------|
| 27.6 | 19.0 | 39.0 | 6.5 | 3.5 | 10 | 48.0 | B | 093SM10S01 |

PROFILE SLIDER CENTER SLOT

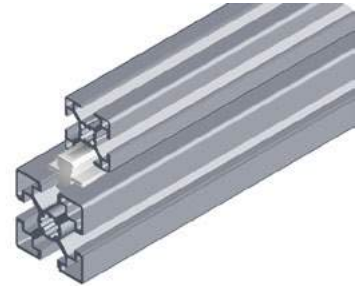
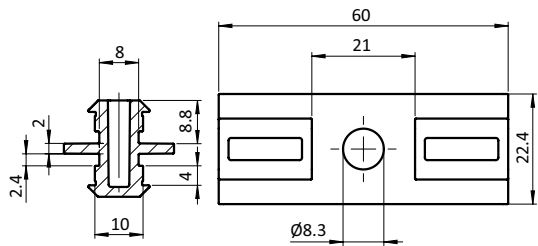
| | |
|----------------------|-----------------------------------------------------------------------------------------------------|
| MODEL | Slot 8, 10 |
| DESCRIPTION | To guide slidingly profiles with slot; economic and wear-resistant solution, e.g. for sliding doors |
| MATERIAL | Plastic POM |
| SURFACE | Natural |
| FASTENING | With sheet-metal screws |
| PACK QUANTITY | 10 pieces |



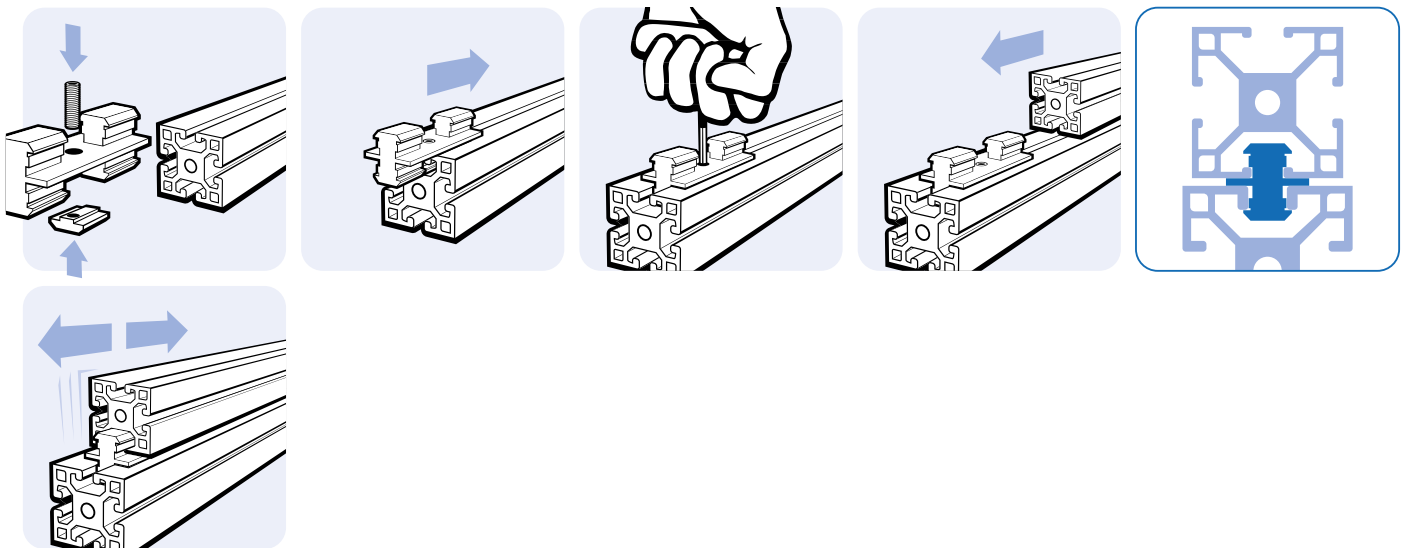
| A [mm] | D [mm] | B [mm] | C [mm] | E [mm] | N | Weight [g] | Profile | Part # |
|--------|--------|--------|--------|--------|----|------------|---------|-------------------------|
| 18.0 | 15.0 | 26.0 | 3.0 | 2.8 | 8 | 29.0 | B | 093SM08 |
| 27.6 | 19.0 | 39.0 | 6.5 | 3.5 | 10 | 53.0 | B | 093SM10 |

PROFILE SLIDER 8 + 10

| | |
|----------------------|-----------------------------------------------------------------------------------------------------------------------------------------|
| MODEL | Slot 8+10 |
| DESCRIPTION | To guide slidingly profiles with slots 8 and 10, also combinable; economical and wear-resistant solution, for example for sliding doors |
| MATERIAL | Plastic POM |
| COLOR | Natural |
| FASTENING | Slot 8 with DIN 914 (ISO 4028), M8 x 12 Slot 10 with DIN 914 (ISO 4028), M8 x 20 |
| PACK QUANTITY | 10 pieces |

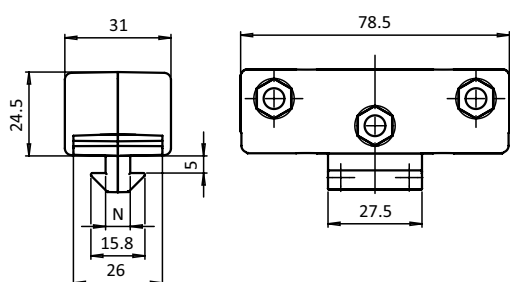


| Slot | Weight [g] | Profile | Part # |
|--------|------------|---------|-----------|
| 8 / 10 | 9.0 | B | 093SM0810 |

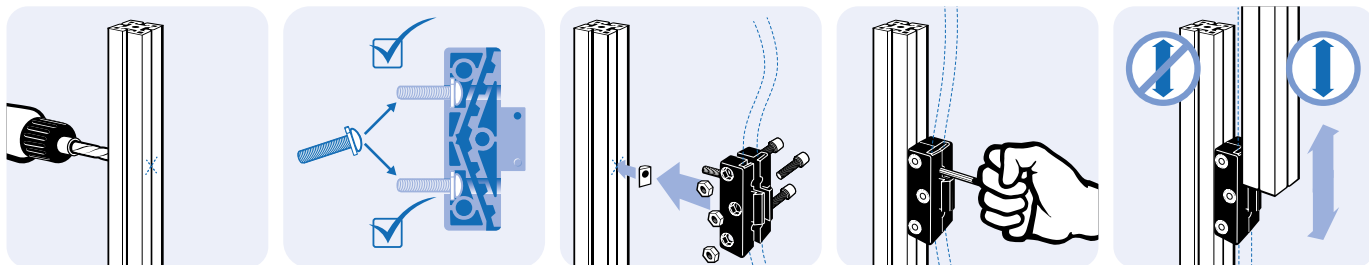


LIFT DOOR GUIDE (SET)

| | |
|----------------------|--------------------------------------------------------------------------------------------------------------------------------------------------------------------------------------|
| MODEL | Plastic POM |
| DESCRIPTION | To assemble sliding doors with 25 mm width PUR toothed belt DIN 7721 T10 (not included in delivery) |
| MATERIAL | Housing: Plastic POM Assembly set: Steel |
| SURFACE | Assembly set: Zinc plated |
| COLOR | Housing: Black |
| SET | 1 two-part housing, 1 inlay sheet, 1 screw ISO 7380 - M6 x 25, 3 hexagon nuts DIN 934 - M6, 3 screws DIN EN ISO 4762 (DIN 912) - M6 x 25, 1 T-slot nuts - Nut 8 - M 6 |
| PACK QUANTITY | 10 sets |

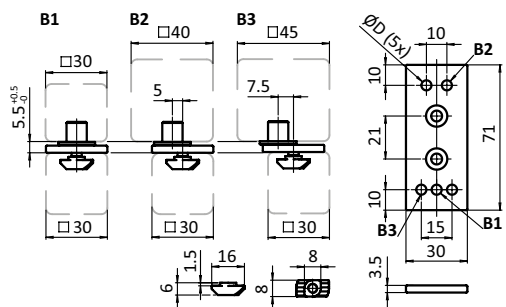


| N | Weight [g] | Profile | Part # |
|---|------------|---------|-----------|
| 8 | 97.0 | I | 093087S01 |

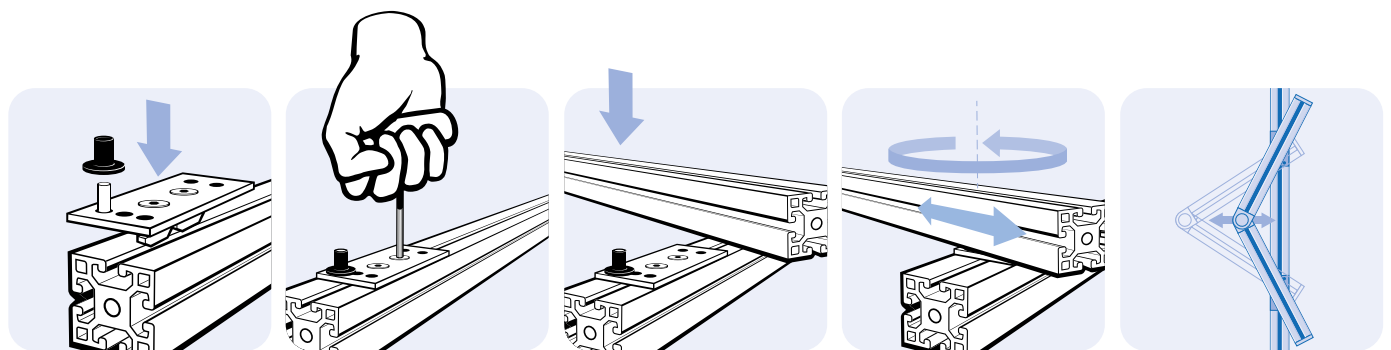


FOLDING DOOR ELEMENT (SET)

| | |
|----------------------|--------------------------------------------------------------------------------------------------------------------------------------------------------------------------|
| MODEL | Aluminum |
| DESCRIPTION | To assemble folding doors, simultaneous turning and sliding movement; guide bush can be inserted in different positions for slot 8 and 10; high quality design |
| MATERIAL | Folding door element: Aluminum Screws: Steel Hammer nuts: Steel Pin: Steel Guide bushes: POM |
| SURFACE | Folding door element: Anodized Screws: Zinc plated Hammer nuts: Zinc plated Pin: Zinc plated |
| COLOR | Guide bushes: Black |
| SET | 1 folding door element, 2 screws DIN 7991 - M5 x 10, 2 hammer nuts - slot 8 - M5, 1 pin ISO 2338 - D5 x 14, 1 guide bush - slot 8, 1 guide bush - slot 10 |
| PACK QUANTITY | 10 sets |
| SPECIALS | Other surfaces on request |

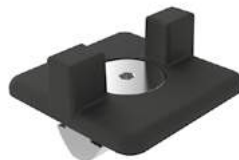
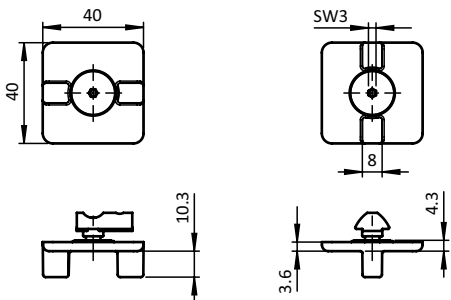


| ØD [mm] | Weight [g] | Profile | Part # |
|---------|------------|---------|---------------|
| 4.9 | 147.9 | B | 093FDE30N0810 |

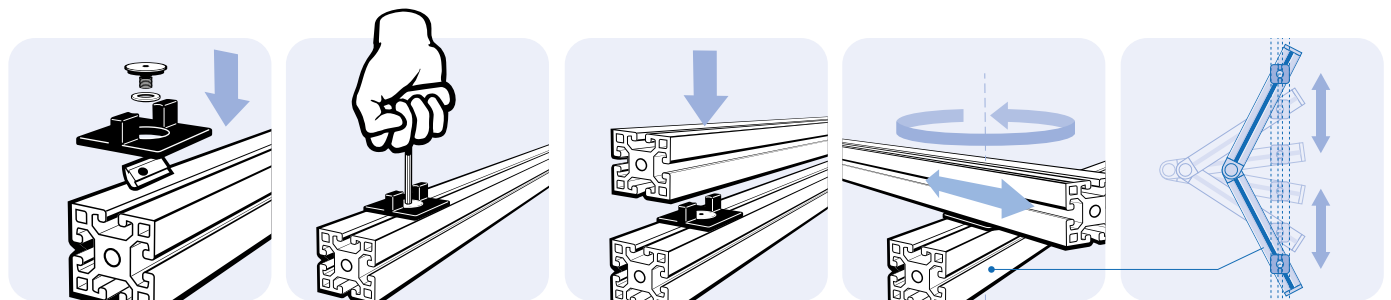


T-SLOT SLIDER (SET)

| | |
|----------------------|-------------------------------------------------------------------------------------------------------------------------------------------------------------------------------------------|
| MODEL | Slot 8 |
| DESCRIPTION | For the assembly of folding doors with simultaneous rotating and sliding movement; without a T-slot also suitable for side to end mounting into the core hole for e.g. keyboard pull outs |
| MATERIAL | T-slot slider: Plastic POM Special screw: Steel Washer: Stainless steel T-slot nut: Steel |
| SURFACE | Special screw: Zinc plated Washer: Plain T-slot nut: Zinc plated |
| COLOR | T-slot slider: Black |
| SET | 1 T-slot slider, 1 special screw - M8 x 13, 1 washer DIN 988, 1 T-slot nut - slot 8 - M8 |
| PACK QUANTITY | 10 sets |
| SPECIALS | Other colors on request |
| TIP | For gap distance 5 mm |

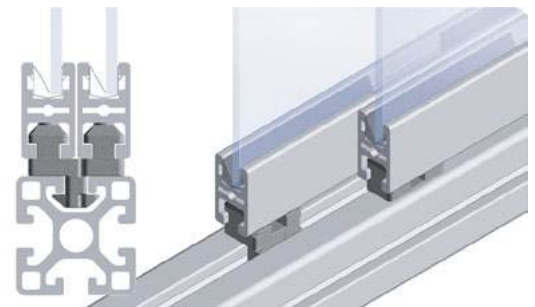
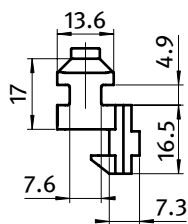
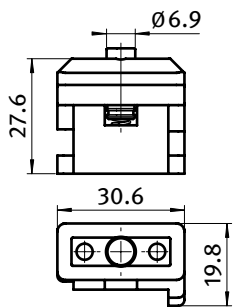


| Max. Load [N] | Weight [g] | Profile | Part # |
|---------------|------------|---------|--------------|
| 60 N | 25.0 | I | 093ST4040N08 |

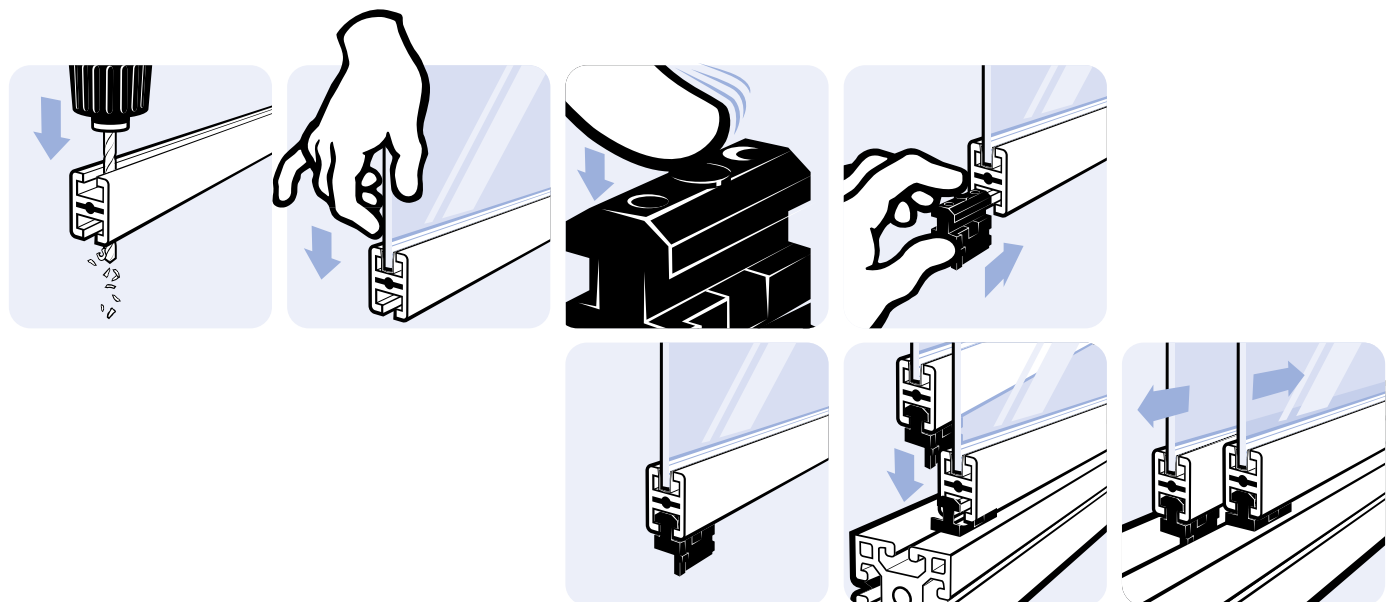


SLIDING DOOR GUIDE FOR CLAMP PROFILE

| | |
|-------------------------|-------------------------------------------------------------------------------------|
| MODEL | Plastic POM |
| DESCRIPTION | To assemble sliding doors |
| MATERIAL | Sliding door guide: Plastic POM Mechanism: Steel |
| SURFACE | Mechanism: Zinc plated |
| MAX. WEIGHT DOOR | 10 kg |
| SET | 2 Sliding door guides left side version 2 Sliding door guides right side version |
| PACK QUANTITY | 10 pieces / 10 set |
| TIP | Compatible Clamping Spring see 092090 |



| Version | N | Weight [g] | Profile | Part # |
|------------------------|---|------------|---------|---------------------------|
| (L) Left side version | 8 | 11.0 | I | 093084L |
| (R) Right side version | 8 | 11.0 | I | 093084R |
| Set | 8 | 44.0 | I | 093084S01 |



SLIDING DOOR GUIDE SET 40 / 45

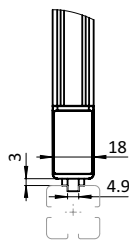
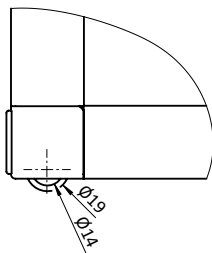
| | |
|----------------------|-----------------------------------------------------------------------------------------------------------------------------------------------------------------------------------------------------------------------------------------------------------------|
| MODEL | Slot 8 - 10 |
| DESCRIPTION | To connect two aluminum profiles at right angles and to guide lift or sliding doors in the slot of an aluminum profile, with ball bearing; spacers can be changed: for a 2 mm distance between door and fixed profile or a 2 or 4 mm distance between two doors |
| MATERIAL | Casing: Aluminum die-cast Roller: Plastic PA, glass ball reinforced Spacer: Plastic PA, glass fiber reinforced |
| SURFACE | Casing: Plain |
| COLOR | Roller: Black Spacer: Natural |
| SET 1 | 1 casing, 1 roller, 1 screw as axle, 3 spacers |
| SET 2 | 1 casing, 1 roller, 1 screw as axle, 4 spacers |
| PACK QUANTITY | 10 sets |



| Set | B [mm] | ØD [mm] | N | Weight [g] | Profile | Part # |
|-------|--------|---------|----|------------|---------|---------------|
| Set 1 | 40 | 8.5 | 8 | 137.0 | | 093095 |
| Set 2 | 40 | 12.5 | 10 | 175.0 | B | 093097 |
| | 45 | 12.5 | 10 | 230.0 | B | 093098 |

SLIDING DOOR GUIDE INSERT FOR FRAME CORNER CONNECTOR 18 X 32 (SET)

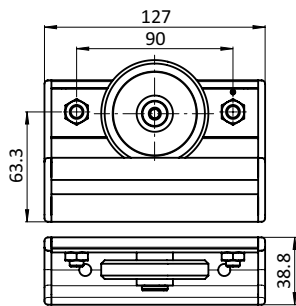
| | |
|----------------------|--------------------------------------------------------------------------------------------------------------------------------------|
| MODEL | Slot 5 |
| DESCRIPTION | To guide lift or sliding doors in the slot of an aluminum profile, to insert in the frame corner connector 18 x 32 for clamp profile |
| MATERIAL | Guide insert: Plastic PA, glass fiber reinforced |
| COLOR | Guide insert: Gray ≈ RAL 7042 |
| SET | 1 guide insert, 1 cover cap, 1 stopper |
| PACK QUANTITY | 10 sets |
| TIP | Compatible Frame Corner Connector 18 x 32 for Clamp Profile (Set) see 093WWC18321N08S01 |



| | Weight [g] | Profile | Part # |
|--|------------|---------|--------------------------------|
| | 10.2 | I | 093WWC18321S01 |

BEARING UNIT PA 1 ROLLER FOR C-RAIL-PROFILE I SLOT Ø 14

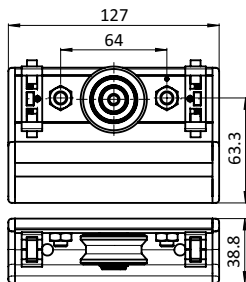
| | |
|----------------------|---------------------------------------------------------------------------------------------------------------------------------------------------------------------------------------------------------|
| MODEL | Pre-assembled, plastic PA |
| DESCRIPTION | To build sliding doors To linearly guide small loads, plastic roller with slide bearings runs directly on the aluminum of the slot with Ø 14 mm |
| MATERIAL | Roller: Plastic PA Carrier plate: Steel Screws: Steel Threaded sleeve: Steel Press nuts: Steel Tension pin: Steel Profile: Aluminum Cover caps: Plastic PA, glass fibre reinforced |
| SURFACE | Carrier plate: Zinc plated Screws: Zinc plated Threaded sleeve: Zinc plated Press nuts: Zinc plated Profile: Anodized |
| COLOR | Roller: Black Cover caps: Black |
| PACK QUANTITY | 1 piece |



| Weight [g] | Profile | Part # |
|------------|---------|------------------|
| 491.7 | I | 093CAU081A128S01 |

BEARING UNIT 1 ROLLER SHAFT Ø 14 FOR C-RAIL-PROFILE I

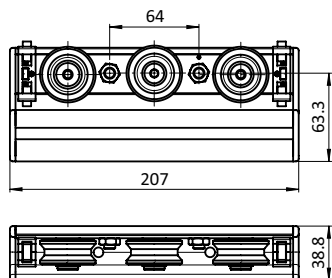
| | |
|----------------------|-------------------------------------------------------------------------------------------------------------------------------------------------------------------------------------------------------------------------------------------------------------------------------------|
| MODEL | Pre-assembled, steel |
| DESCRIPTION | To build sliding doors To linearly guide loads, steel roller with ball bearings runs directly on shaft Ø 14 mm |
| MATERIAL | Roller: Steel Carrier plate: Steel Screws: Steel Threaded sleeve: Steel Press nuts: Steel Tension pin: Steel Wiper and lubricators: Plastic PA / felt / spring steel Wood screws: Steel Profile: Aluminum Cover caps: Plastic PA, glass fibre reinforced |
| SURFACE | Roller: Zinc plated Carrier plate: Zinc plated Screws: Zinc plated Threaded sleeve: Zinc plated Press nuts: Zinc plated Tension pin: Zinc plated Wood screws: Zinc plated Profile: Anodized |
| COLOR | Wiper and lubricators: Black Cover caps: Black |
| PACK QUANTITY | 1 piece |



| Weight [g] | Profile | Part # |
|------------|---------|---------------------------|
| 475.5 | I | 093CIUD141SA128S01 |

BEARING UNIT 3 ROLLERS SHAFT Ø 14 FOR C-RAIL-PROFILE I

| | |
|----------------------|--------------------------------------------------------------------------------------------------------------------------------------------------------------------------------------------------------------------------------------------------------------------------------------------------------------------------------------------|
| MODEL | Pre-assembled, steel |
| DESCRIPTION | To build sliding doors To linearly guide loads, steel roller with ball bearings runs directly on shaft Ø 14 mm To tighten the eccentric screw, a pin spanner is needed for the four holes of the adjusting washer |
| MATERIAL | Rollers: Steel Carrier plate: Steel Screws: Steel Threaded sleeves: Steel Press nuts: Steel Excentric screw: Steel Adjusting washer: Steel Tension pin: Steel Wiper and lubricators: Plastic PA / felt / spring steel Wood screws: Steel Profile: Aluminum Cover caps: Plastic PA, glass fibre reinforced |
| SURFACE | Rollers: Zinc plated Carrier plate: Zinc plated Screws: Zinc plated Threaded sleeves: Zinc plated Press nuts: Zinc plated Excentric screw: Zinc plated Adjusting washer: Zinc plated Tension pin: Zinc plated Wood screws: Zinc plated Profile: Anodized |
| COLOR | Wiper and lubricators: Black Cover caps: Black |
| PACK QUANTITY | 1 piece |

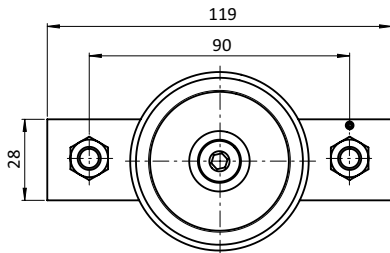


7

| Weight [g] | Profile | Part # |
|------------|---------|--------------------|
| 801.0 | I | 093CIUD141SA208S01 |

BEARING KIT PA 1 ROLLER SLOT Ø 14 FOR C-SLIDE PROFILE I (SET)

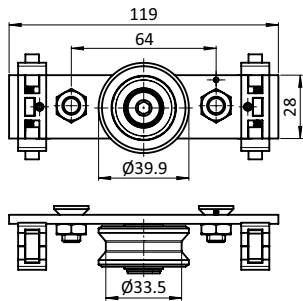
| | |
|----------------------|-----------------------------------------------------------------------------------------------------------------------------------------------------------------------------------------------------------------|
| MODEL | Pre-assembled, plastic PA |
| DESCRIPTION | For the construction of bearing units, assembly with machining to C-slide profile I To linearly guide small loads, plastic roller with slide bearings runs directly on the aluminum of the slot with Ø 14 mm |
| MATERIAL | Roller: Plastic PA Carrier plate: Steel Screws: Steel Threaded sleeve: Steel Press nuts: Steel Tension pin: Steel |
| SURFACE | Carrier plate: Zinc plated Screws: Zinc plated Threaded sleeve: Zinc plated Press nuts: Zinc plated |
| COLOR | Roller: Black |
| SET | 1 roller 1 carrier plate 3 screws DIN EN ISO 10642 (DIN 7991) - M8 x 16 1 threaded sleeve - M8 2 press nuts - M8 1 tension pin |
| PACK QUANTITY | 1 set |
| TIP | Compatible Cover Cap for C-slide Profile I (Set) see 091401S01 Ready Bearing Unit PA 1 Roller for C-Rail-Profile I Slot Ø 14 see 093CAU081A128S01 |



| Weight [g] | Profile | Part # |
|------------|---------|--------------------------------|
| 171.7 | I | 093CA081119S01 |

BEARING KIT 1 ROLLER SHAFT Ø 14 FOR C-SLIDE PROFILE I (SET)

| | |
|----------------------|--------------------------------------------------------------------------------------------------------------------------------------------------------------------------------------------------------------|
| MODEL | Pre-assembled, steel |
| DESCRIPTION | For the construction of bearing units, assembly with machining to C-slide profile I To linearly guide loads, steel roller with ball bearings runs directly on shaft Ø 14 mm |
| MATERIAL | Roller: Steel Carrier plate: Steel Screws: Steel Threaded sleeve: Steel Press nuts: Steel Tension pin: Steel Wiper and lubricators: Plastic PA / felt / spring steel Wood screws: Steel |
| SURFACE | Roller: Zinc plated Carrier plate: Zinc plated Screws: Zinc plated Threaded sleeve: Zinc plated Press nuts: Zinc plated Tension pin: Zinc plated Wood screws: Zinc plated |
| COLOR | Wiper and lubricators: Black |
| SET | 1 roller 1 carrier plate 3 screws DIN EN ISO 10642 (DIN 7991) - M8 x 16 1 threaded sleeve - M8 2 press nuts - M8 1 tension pin 2 wiper and lubricators 2 wood screws - 3.5 x 20 |
| PACK QUANTITY | 1 set |
| TIP | Compatible Cover Cap for C-slide Profile I (Set) see 091401S01 Ready Bearing Unit 1 Roller Shaft Ø 14 for C-Rail-Profile I see 093CIUD141SA128S01 |

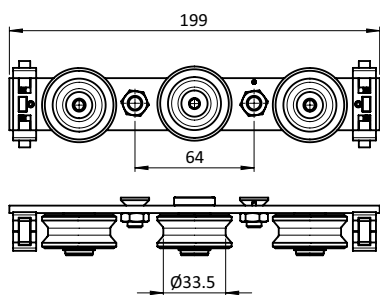


7

| Weight [g] | Profile | Part # |
|------------|---------|---------------------------------|
| 155.6 | I | 093CID14S119S01 |

BEARING KIT 3 ROLLERS SHAFT Ø 14 FOR C-SLIDE PROFILE I (SET)

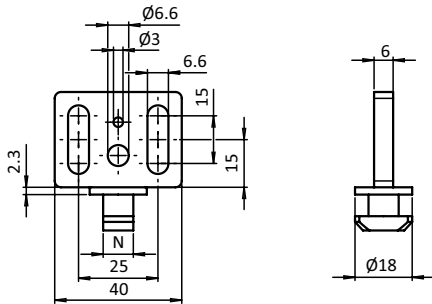
| | |
|----------------------|---------------------------------------------------------------------------------------------------------------------------------------------------------------------------------------------------------------------------------------------------------------------------------------|
| MODEL | Pre-assembled, steel |
| DESCRIPTION | For the construction of bearing units, assembly with machining to C-slide profile I To linearly guide loads, steel rollers with ball bearings runs directly on shaft Ø 14 mm To tighten the eccentric screw, a pin spanner is needed for the four holes of the adjusting washer |
| MATERIAL | Rollers: Steel Carrier plate: Steel Screws: Steel Threaded sleeves: Steel Press nuts: Steel Excentric screw: Steel Adjusting washer: Steel Tension pin: Steel Wiper and lubricators: Plastic PA / felt / spring steel Wood screws: Steel |
| SURFACE | Rollers: Zinc plated Carrier plate: Zinc plated Screws: Zinc plated Threaded sleeves: Zinc plated Press nuts: Zinc plated Excentric screw: Zinc plated Adjusting washer: Zinc plated Tension pin: Zinc plated Wood screws: Zinc plated |
| COLOR | Wiper and lubricators: Black |
| SET | 3 rollers 1 carrier plate 3 screws DIN EN ISO 10642 (DIN 7991) - M8 x 16 2 threaded sleeve - M8 2 press nuts - M8 1 excentric screw M8 1 adjusting washer - M8 1 tension pin 2 wiper and lubricators 2 wood screws - 3.5 x 20 |
| PACK QUANTITY | 1 set |
| TIP | Compatible Cover Cap for C-slide Profile I [Set] see 091401S01 Ready Bearing Unit 3 Rollers Shaft Ø 14 for C-Rail-Profile I see 093CIUD141SA208S01 |



| Weight [g] | Profile | Part # |
|------------|---------|---------------------------------|
| 274.2 | I | 093CID14S199S01 |

PANEL SLIDER

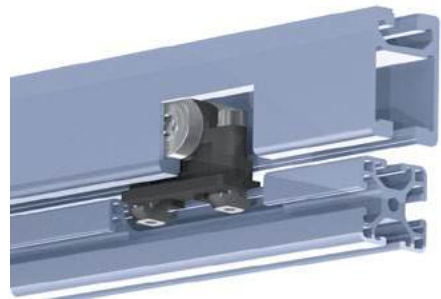
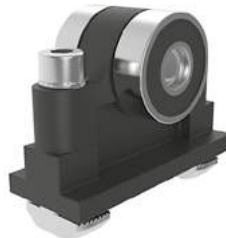
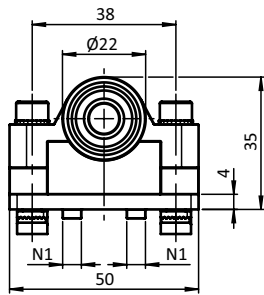
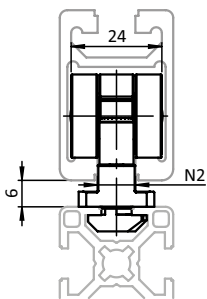
| | |
|----------------------|-------------------------------------------------------------------------|
| MODEL | Slot 10 |
| DESCRIPTION | To guide guide lift or sliding doors in the slot of an aluminum profile |
| MATERIAL | Plastic POM |
| COLOR | Black |
| PACK QUANTITY | 10 pieces |



| N | Weight [g] | Profile | Part # |
|----|------------|---------|---------|
| 10 | 9.0 | B | 093SN10 |

TROLLEY (SET)

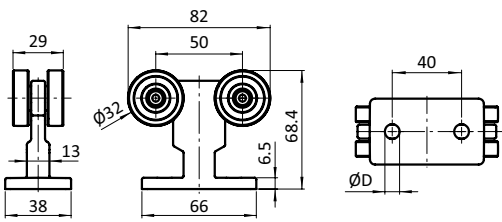
| | |
|----------------------|--------------------------------------------------------------------------------------------------------------------------------------------------------------------------------|
| MODEL | Pre-assembled |
| DESCRIPTION | For moving suspended sliding doors built of slot 8 profiles in slot 10 rail profile |
| MATERIAL | Trolley: Plastic PA Bearing: Steel Straight pin: Stainless steel Mounting material: Steel |
| SURFACE | Bearing: Chrome plated (RoHS-konform) Cylinder pin: Plain Mounting material: Zinc plated |
| COLOR | Trolley: Black |
| SET | 1 Trolley with 2 mounted bearings 1 Cylinder pin DIN 7 - Ø 8 x 20, 2 Screws DIN EN ISO 4762 (DIN 912) - M5 x 30, 2 Washers 5-FSt, 2 Hammer head nuts - slot 8 - M5 |
| PACK QUANTITY | 1 set |



| | Fmax [N] | N1 | N2 | Weight [g] | Profile | Part # |
|--|-----------------|-----------|-----------|-------------------|----------------|---------------|
| | 150.0 | 8.0 | 10.0 | 71.0 | B | 093101 |

TROLLEY 40 FOR OVERHEAD C-RAIL, WITH MOUNTING PLATE

| | |
|----------------------|-----------------------------------------------------------------------------------------------------------------------------------------------------------------------------------------------------------------------------|
| MODEL | Aluminum die-cast |
| DESCRIPTION | To build towing trolleys with aluminum profile 40, for hanging cables or lines optional tool hangers can be inserted into the slot of the aluminum profile; Ball bearing guide of the trolley in the overhead C-monorail |
| MATERIAL | Trolley: Aluminum die-cast Ball bearings: Steel |
| SURFACE | Trolley: Plain |
| PACK QUANTITY | 10 pieces |
| TIP | Compatible Tool Hangers see 093007 |



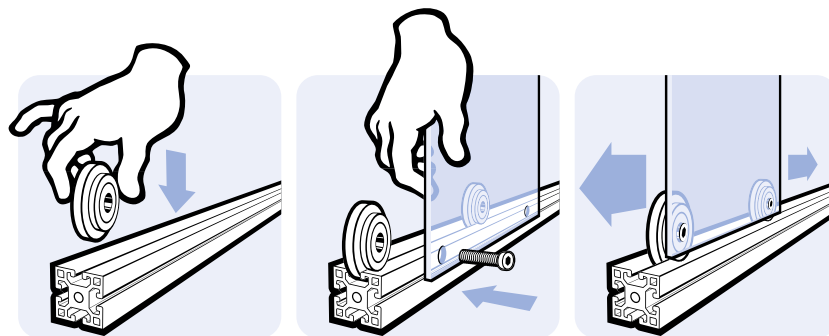
| D [mm] | Weight [g] | Part # |
|--------|------------|--------|
| 8.5 | 250.0 | 093820 |

ROLLER Ø 19

| | |
|----------------------|---------------------------------------------------------------------------|
| MODEL | Plastic PA, Slot 5 |
| DESCRIPTION | To guide moving parts in the slot of the aluminum profile |
| MATERIAL | Roller: Plastic PA, glass ball reinforced Bush: Steel Washer: Steel |
| SURFACE | Bush: Zinc plated Washer: Zinc plated |
| COLOR | Black |
| PACK QUANTITY | 10 pieces |
| SPECIALS | ESD electrostatical discharging, other colors on request |

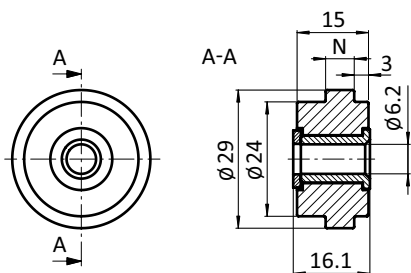


| N | Weight [g] | Part # |
|---|------------|--------|
| 5 | 4.2 | 093028 |

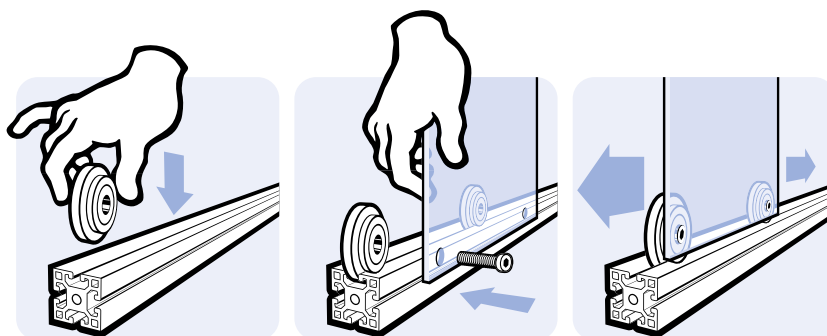


ROLLER Ø 29

| | |
|----------------------|---------------------------------------------------------------------------|
| MODEL | Plastic PA, Slot 6 |
| DESCRIPTION | To guide moving parts in the slot of the aluminum profile |
| MATERIAL | Roller: Plastic PA, glass ball reinforced Bush: Steel Washer: Steel |
| SURFACE | Bush: Zinc plated Washer: Zinc plated |
| COLOR | Black |
| PACK QUANTITY | 10 pieces |
| SPECIALS | ESD electrostatical discharging, other colors on request |

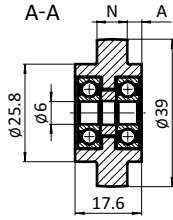
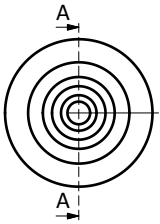


| Slot | Weight [g] | Part # |
|------|------------|--------|
| 6 | 14.5 | 093029 |

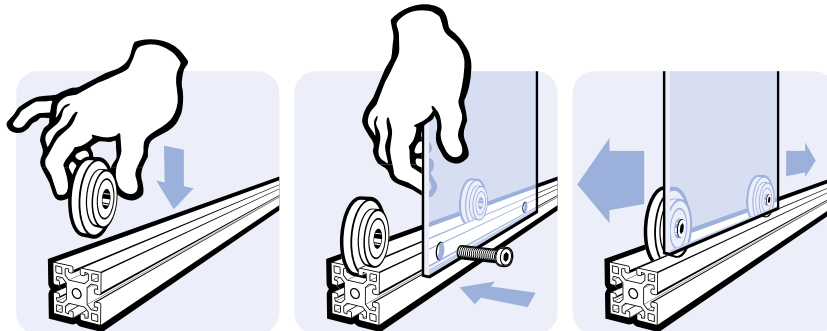


ROLLER Ø 39

| | |
|----------------------|------------------------------------------------------------------------------|
| MODEL | Plastic PA, Slot 8, 10, 12 |
| DESCRIPTION | To guide moving parts in the slot of the aluminum profile, with ball bearing |
| MATERIAL | Plastic PA, glass fiber reinforced |
| COLOR | Black, gray |
| PACK QUANTITY | 10 pieces |
| SPECIALS | ESD electrostatical discharging, other colors on request |

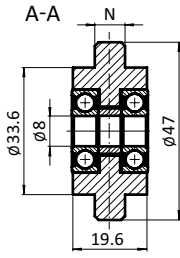
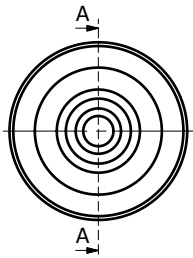


| | Color | A [mm] | N | Weight [g] | Part # |
|--|-----------------|--------|----|------------|------------------|
| | Black | 3.8 | 8 | 30.0 | 093020 |
| | | 3.8 | 10 | 31.8 | 093021 |
| | Gray ≈ RAL 7042 | 3.8 | 8 | 30.0 | 093020S03 |

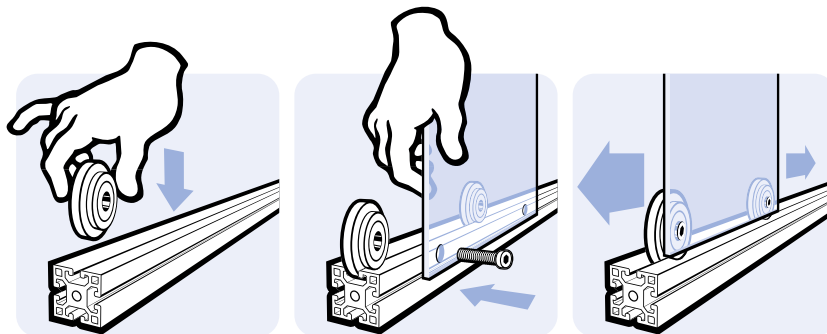


ROLLER Ø 47

| | |
|----------------------|------------------------------------------------------------------------------|
| MODEL | Plastic PA, Slot 8, 10 |
| DESCRIPTION | To guide moving parts in the slot of the aluminum profile, with ball bearing |
| MATERIAL | Plastic PA, glass ball reinforced Pins: Zinc plated steel |
| COLOR | Black |
| PACK QUANTITY | 10 pieces |
| SPECIALS | ESD electrostatical discharging, other colors on request |



| N | Weight [g] | Part # |
|----|------------|--------|
| 8 | 48.3 | 093024 |
| 10 | 50.0 | 093025 |

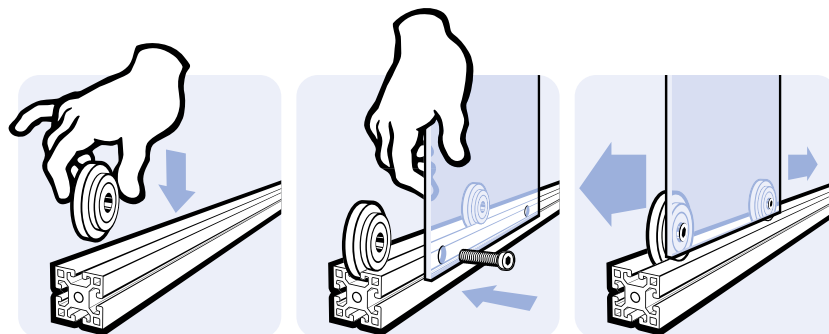


ROLLER Ø 58

| | |
|----------------------|----------------------------------------------------------------------------------------------------------------------------------------------|
| MODEL | Plastic PA, Slot 10 |
| DESCRIPTION | To guide moving parts in the slot of the aluminum profile, with ball bearing |
| MATERIAL | Plastic PA, glass ball reinforced |
| COLOR | Black |
| SET | 1 roller, 1 hammer nut, slot 10 M8, zinc-plated steel, 1 cylinder head screw DIN 7984 M8 x 40, zinc-plated steel, 1 washer DIN 7349 |
| PACK QUANTITY | 10 sets |
| SPECIALS | ESD electrostatical discharging, other colors on request |

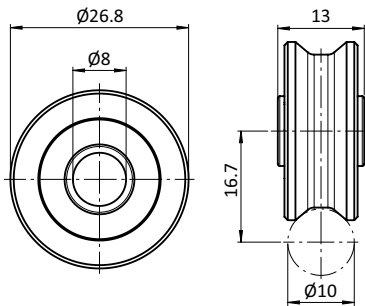


| | N | Weight [g] | Part # |
|--|----|------------|--------|
| | 10 | 154.5 | 093026 |



ROLLER FOR SHAFTS Ø 10

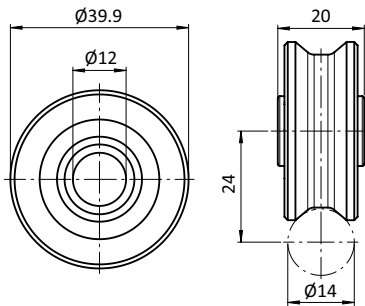
| | |
|----------------------|--------------------------------------------------------------------------------------------------------|
| MODEL | Steel |
| DESCRIPTION | To guide moving parts on a sanded shaft Ø 10 With ball bearing To build individual bearing units |
| MATERIAL | Steel |
| SURFACE | Sanded |
| PACK QUANTITY | 1 piece |



| Weight [g] | Part # |
|------------|----------|
| 37.3 | 340ME575 |

ROLLER FOR SHAFTS Ø 14

| | |
|----------------------|--------------------------------------------------------------------------------------------------------|
| MODEL | Steel / stainless steel |
| DESCRIPTION | To guide moving parts on a sanded shaft Ø 14 With ball bearing To build individual bearing units |
| MATERIAL | Steel / stainless steel |
| SURFACE | Sanded |
| PACK QUANTITY | 1 piece |



| Version | Material | Weight [g] | Part # |
|-----------------------------|-----------------|------------|--------------------------|
| Cover Disks Steel | Steel | 132.0 | 340ME566 |
| Sealing Washers Rubber | Steel | 132.0 | 340ME567 |
| Cover Disks Stainless Steel | Stainless steel | 132.0 | 340ME571 |

BEARING UNITS

FATH Bearing Units: Easily design slide units and sliding doors yourself

- Individual design of slide units and sliding doors
- Centric and eccentric versions available
- Can be used offset by 180° for maximum flexibility
- Rugged construction

HIGHLIGHTS

With **FATH** Bearing Units for C-rail profiles, you can easily design slide units and sliding doors for an industrial environment. The different versions are equipped with hardened rollers inside in different materials and versions and offer you a high degree of flexibility for the construction of individual applications according to need and customer requirements.

For the construction of guide carriages, the **FATH** Bearing Unit is combined with a suitable carriage plate. Centric and eccentric bearing units with different bolt geometries are available. As the eccentric bolts can also be adjusted afterward, you can build a guide unit free of play. The ideal result is achieved when two centric and two eccentric bearing units are installed.

In order to permanently ensure lubrication of guide rails and bearing units, **FATH** has a suitable stripping and lubrication system that protects against premature wear.

INDIVIDUAL CONSTRUCTIONS

Countless applications can be implemented

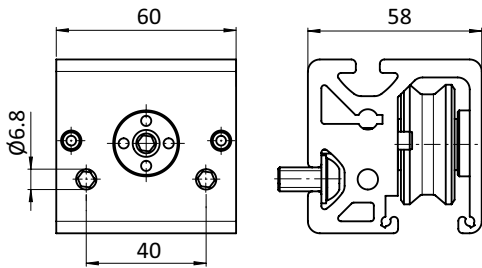
Slide unit or suspension for sliding doors: The application possibilities are virtually unlimited. Since the **FATH** Bearing Units can also be installed offset by 90°, a 3D printer, for example, can be moved vertically and horizontally by attaching the appropriate slide units.

Sliding doors for a wide range of functions in production and assembly can be precisely constructed – whether simple construction for closing small areas or as part of a complex enclosure with practical access. The sliding doors are guided by mounting the **FATH** Bearing Units on a C-rail system and D14 shafts. For large structures, the guideway can be supported by rollers on the lower side if required.



Reduce wear and tear

To minimize wear and tear, **FATH** Bearing Units are equipped with a lubrication device. The cap is equipped with a felt lining, which in addition protects the lubrication unit against leakage. For lubrication, the lubricating oil is simply poured into the opening.



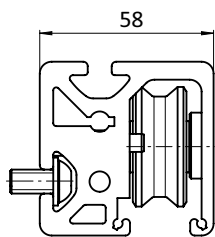
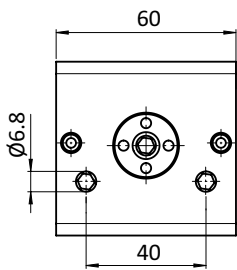
Get to know it better now!

bearing-unit.fath24.com



BEARING UNIT 1 ROLLER ECCENTRIC SHAFT Ø 14

| | |
|----------------------|--------------------------------------------------------------------------------------------------------------------------------------------------------------------------------------------------------------------------------------------------------------------------------------|
| MODEL | Pre-assembled, steel |
| DESCRIPTION | To build sliding carriages To linearly guide loads, steel roller with ball bearings runs directly on shaft Ø 14 mm Completely pre-assembled from roller profile I slot 8 To tighten the eccentric screw, a pin spanner is needed for the four holes of the adjusting washer |
| MATERIAL | Roller: Steel Screws: Steel Excentric screw: Steel Adjusting washer: Steel Washers: Steel Tension pins: Steel Profile: Aluminum |
| SURFACE | Roller: Zinc plated Screws: Zinc plated Excentric screw: Zinc plated Adjusting washer: Zinc plated Washers: Zinc plated Tension pins: Zinc plated Profile: Anodized |
| PACK QUANTITY | 1 piece |
| TIP | Compatible Wiper and Lubricator Ø 14 for Roller Profile I Slot 8 (Set) see 091381S01 |



| Weight [g] | Profile | Part # |
|------------|---------|------------------|
| 450.2 | I | 093CIUD141060S01 |

BEARING UNIT 1 ROLLER CENTRIC SHAFT Ø 14

| | |
|----------------------|--------------------------------------------------------------------------------------------------------------------------------------------------------------------------------|
| MODEL | Pre-assembled, steel |
| DESCRIPTION | To build sliding carriages To linearly guide loads, steel roller with ball bearings runs directly on shaft Ø 14 mm Completely pre-assembled from roller profile I slot 8 |
| MATERIAL | Roller: Steel Screws: Steel Washers: Steel Tension pins: Steel Profile: Aluminum |
| SURFACE | Roller: Zinc plated Screws: Zinc plated Washers: Zinc plated Tension pins: Zinc plated Profile: Anodized |
| PACK QUANTITY | 1 piece |
| TIP | Compatible Wiper and Lubricator Ø 14 for Roller Profile I Slot 8 (Set) see 091381S01 |



| Weight [g] | Profile | Part # |
|------------|---------|----------------------------------|
| 450.5 | I | 093CIUD141060S02 |

WIPER AND LUBRICATOR Ø 14 FOR ROLLER PROFILE I SLOT 8 (SET)

| | |
|----------------------|------------------------------------------------------------------------------------------------------------------------------------------------------------------------------------|
| MODEL | Plastic PA |
| DESCRIPTION | Lubrication system for roller profile I to simplify maintenance of bearing units; Lubrication and wiping of particles while in use; Lubricating felt is delivered oil soaked |
| MATERIAL | Housing: Plastic PA, glas fibre reinforced Lubricating felt: Felt Spring: Steel Screw: Steel |
| SURFACE | Spring: Zinc plated Screw: Zinc plated |
| COLOR | Housing: Black |
| PACK QUANTITY | 1 set |
| TIP | Semi-annual oil refill recommended |



| | Weight [g] | Profile | Part # |
|--|------------|---------|---------------------------|
| | 57.8 | I | 091381S01 |

